

CertainTeed
M2TECH
MOISTURE & MOLD
RESISTANT
Gypsum Board



CertainTeed
SAINT-GOBAIN

Gypsum Board

How to Use M2Tech® Gypsum Board

M2Tech® Gypsum Board can be used for new construction or renovations over wood or steel framing. It is typically nailed or screwed to studs spaced 16" (400 mm) or 24" (610 mm) o.c., but can be applied by laminating with an adhesive.

Not recommended for exterior use, exposure to extreme temperatures, or continuously wet or high humidity areas

such as sauna, steam rooms or gang showers. For use in tub and shower enclosures in intermittent wet areas as a base for tile, please consult your local building code. CertainTeed Gypsum recommends use of Diamondback™ Tile Backer for wet area applications. For more information on Diamondback™ Tile Backer go to www.certainteed.com.

Applications

Thickness and Type	Usage
1/2" (12.7 mm) M2Tech® Gypsum Board	For walls and ceilings where 1/2" CertainTeed Regular is commonly used
5/8" (15.9 mm) M2Tech® Type X Gypsum Board	For use when Type X core is required for fire resistance or STC requirements

The greater thickness provides enhanced fire resistance and reduced noise transmission.

Good design and construction practices that prevent water and moisture exposure of building products are the best ways to avoid the growth of mold.

Areas of usage



School



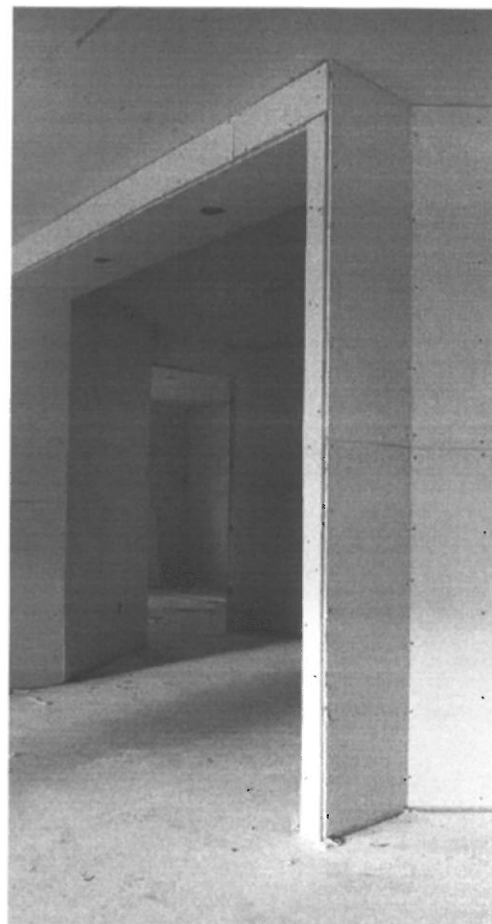
Hospital



Office



Bathroom



buildingresponsibly®

CertainTeed respects the environment through the responsible development of sustainable building products and systems. M2Tech® Moisture & Mold Resistant Gypsum Board is manufactured with 100% recycled paper.



Product Specifications

M2Tech® Moisture and Mold Resistant Gypsum Board is produced in 1/2" (12.7 mm) and 5/8" (15.9 mm) Type X, 48" (1220 mm) width and lengths of 8' (2440 mm) and 12' (3660 mm). Installation is fast, easy and efficient.

Product	Product Standards	Federal Standard SS-L-30d	Application Standards
1/2" M2Tech® Gypsum Board	ASTM C 1396; CAN/CSA-A82.27	Type III	ASTM C 840; CAN/CSA-A82.31; GA-216
5/8" M2Tech® Type X Gypsum Board	ASTM C 1396; CAN/CSA-A82.27	Type III Grade X	ASTM C 840; CAN/CSA-A82.31; GA-216

	1/2" (12.7 mm)	5/8" (15.9 mm) Type X
Widths	48" (1220 mm)	48" (1220 mm)
Standard Lengths*	8' (2440 mm), 12' (3660 mm)	8' (2440 mm), 12' (3660 mm)
Edges	Tapered	Tapered
Water Absorption (ASTM C 473) % by weight	<5%	<5%
Flame Spread	5	5
Smoke Developed	5	5
Mold Resistance Rating** (ASTM D 3273)	10	10
Mold Resistance Rating** (ASTM G 21)	0	0

* Special lengths or edges may be available as a special order. Please contact your CertainTeed Representative.

** No mold growth detected. Note: 10 is the best possible rating for ASTM D 3273 and 0 is the best possible rating for G 21.



™ © CertainTeed is a trademark of CertainTeed Corporation. All other trademarks are the property of CertainTeed's affiliates and related companies.

NOTICE: The information in this document is subject to change without notice. CertainTeed assumes no responsibility for any errors that may inadvertently appear in this document.

ASK ABOUT ALL OF OUR OTHER CERTAINTEED® PRODUCTS AND SYSTEMS:

ROOFING • SIDING • TRIM • WINDOWS • DECKING • RAILING • FENCE
INSULATION • GYPSUM • CEILINGS • FOUNDATIONS • PIPE

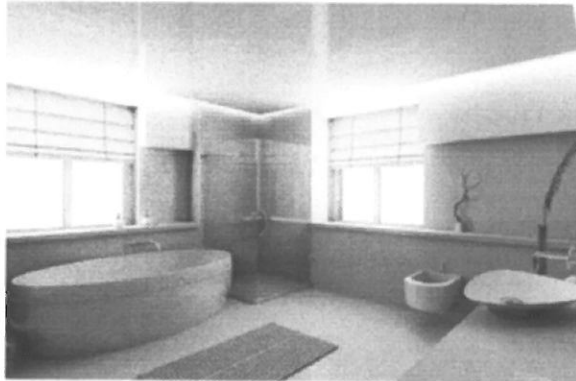
www.certainteed.com <http://blog.certainteed.com>

CertainTeed Corporation
P.O. Box 860
Valley Forge, PA 19482

Professional: 800-233-8990
Consumer: 800-782-8777

11/10 CertainTeed Gypsum. Printed in U.S.A. on recycled paper.
CTG-2401/5M/01-2011

ProRoc® Moisture & Mold Resistant Gypsum Board with M2Tech SH



[Overview](#) | [Technical Information](#) | [Installation](#) | [Warranty](#) | [Green Information](#)

For enhanced moisture and mold resistance

CertainTeed's ProRoc® Moisture and Mold resistant family of products features unique M2Tech™ technology. This unique technology combines moisture and mold resistance and is specially engineered to provide enhanced protection against mold growth.

ProRoc® Moisture and Mold Resistant Gypsum Board with M2Tech™ provides enhanced protection against mold growth. It is designed for use on interior walls and ceilings in standard residential, commercial, and institutional applications where enhanced mold resistance is preferred. Also available in Type X for enhance fire resistance.

- Additional zone of protection against moisture and mold
- Achieves the best possible score of 10 for mold resistance per ASTM D 3273
- Achieves the best possible score of 0 for mold resistance per ASTM G 21
- GREENGUARD Children & Schools Certification
- GREENGUARD Indoor Air Quality Certification
- Less than 5% water absorption by weight after 2-hour immersion, as per ASTM C 473 test method
- Lightweight gypsum that is easy to cut and install
- May be finished, painted, or wallpapered using conventional gypsum board techniques
- Qualifies for numerous fire-resistance rated assembly designs for safety and performance
- Handles like other ProRoc gypsum boards

Product Data:

Thickness: 1/2" (12.7mm), 5/8" (15.9mm)

Lengths: 8' (2440mm), 10' (3050mm), 12' (3660mm)

Widths: 4' (1220mm)

Edges: Tapered

Paper: 100% recycled moisture and mold resistant light violet colored face paper and bronze back paper

Weight: 1.60 lb/ft² (7.8kg/m²)

M2Tech® Moisture and Mold Resistant

M2Tech® Moisture and Mold Resistant Gypsum Board provides enhanced protection against mold growth. It is designed for use on interior walls and ceilings in standard residential, commercial and institutional applications.

M2Tech® Gypsum Board is a specially formulated product for applications where enhanced moisture and mold resistance is preferred.



A Superior Technology

CertainTeed's M2Tech® Moisture and Mold resistant family of products features unique M2Tech® technology. M2Tech® provides:

- Additional zone of protection against moisture and mold
- Numerous fire-rated assembly designs for safety and performance
- Lightweight gypsum board that handles like other CertainTeed gypsum boards
- Does not require special tools
- Easy to cut and install
- May be finished, painted, or wallpapered using conventional gypsum board techniques
- Achieves scores of 10 and 0 for mold resistance per ASTM D 3273 and ASTM G 21 respectively, the best possible scores for these tests

The M2Tech® Advantage

M2Tech® Moisture and Mold Resistant Gypsum Board has a specially formulated moisture and fire resistant core enclosed in 100% recycled moisture and mold resistant light violet colored face paper and bronze colored back paper.

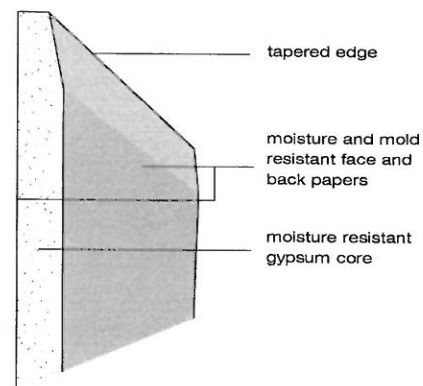
When tested for mold resistance by an independent lab at the time of manufacturing, M2Tech® Gypsum Board achieved scores of 10 and 0 per ASTM D 3273* and ASTM G 21* respectively, the best possible scores for these tests.

UL Classified and ULC Listed for fire resistance, and surface burning characteristics.

M2Tech® Gypsum Board handles like other CertainTeed gypsum board products. It does not require special tools and may be finished, painted, textured or

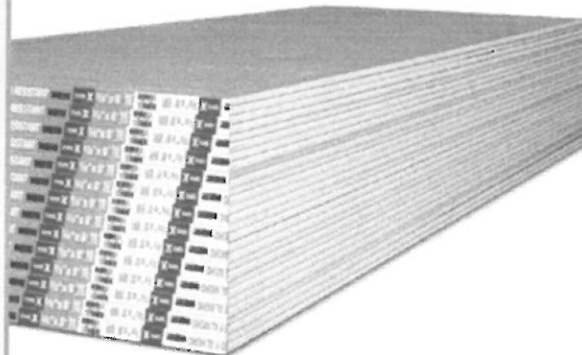
wallpapered using conventional gypsum board techniques.

Smooth paper facers and tapered edges allow for easy finishing with ProRoc® Finishing Systems.



Maximum Framing Spacing – Single Layer

	M2Tech® Gypsum Board Thickness, inch (mm)	Board Orientation to Framing	Maximum Framing Spacing, inch (mm) o.c.
Ceilings:	1/2 (12.7)	Parallel	16 (400)**
	1/2 (12.7)	Perpendicular	24 (610)**
	5/8 (15.9)	Parallel	16 (400)**
	5/8 (15.9)	Perpendicular	24 (610)
Walls:	1/2 (12.7)	Parallel or Perpendicular	24 (610)
	5/8 (15.9)	Parallel or Perpendicular	24 (610) *



The performance of M2Tech® Gypsum Board in actual use may not accurately reproduce the results achieved in this ASTM laboratory test. Good design and construction practices that prevent water and moisture exposure of building products are the most effective strategy to avoid the growth of mold.

****On ceilings to receive hand or spray-applied water based texture material, M2Tech® Gypsum Board with products shall be applied perpendicular to framing and board thickness shall be increased from 1/2" (12.7 mm) to 5/8" (15.9 mm) for 24" (610 mm) o.c. framing.**