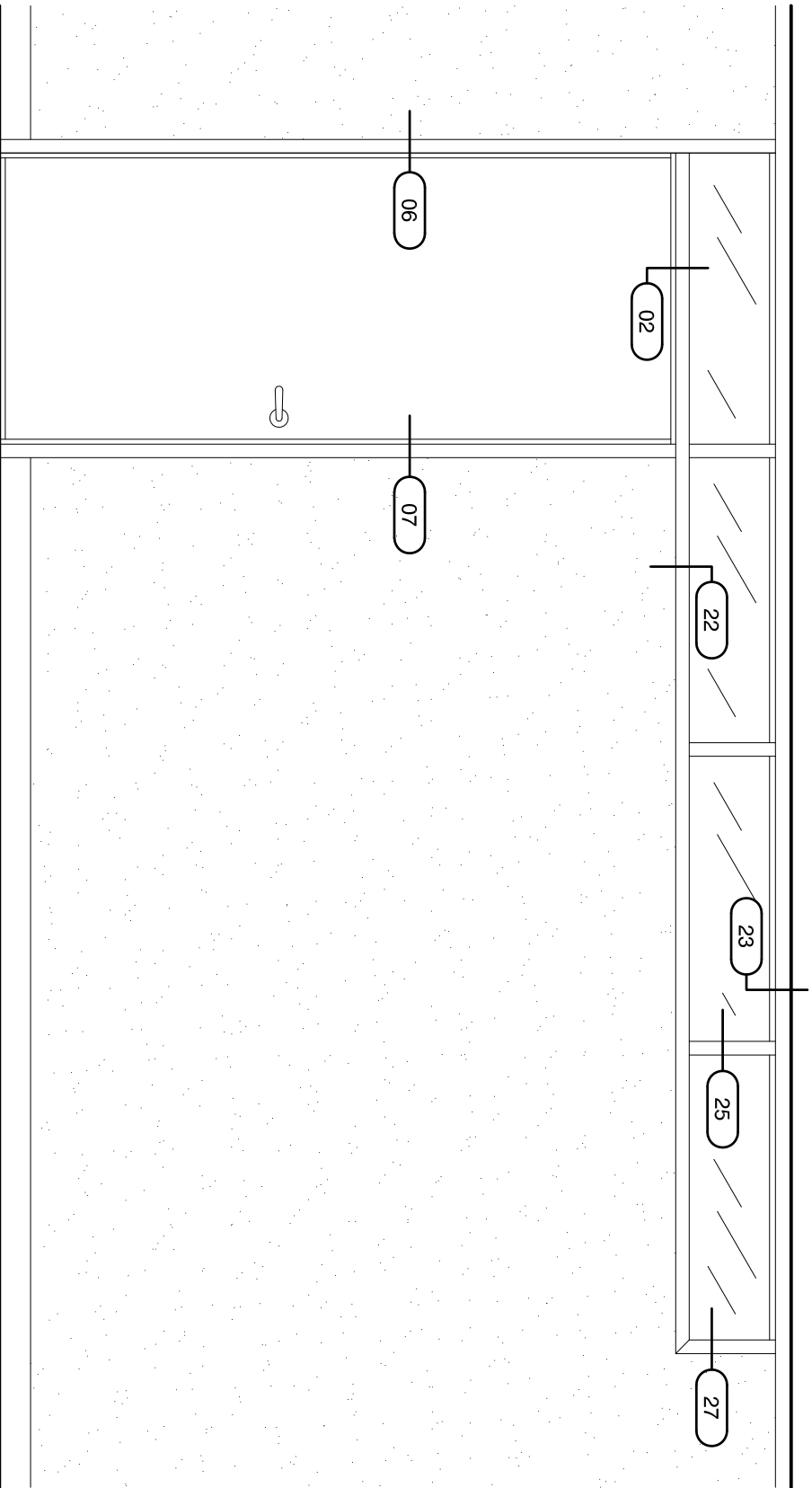


All Aluminum Door & Window Framing

Drawing No.

Sample elevation - full height door  
Drawing code example: 81-1-01

81E-01

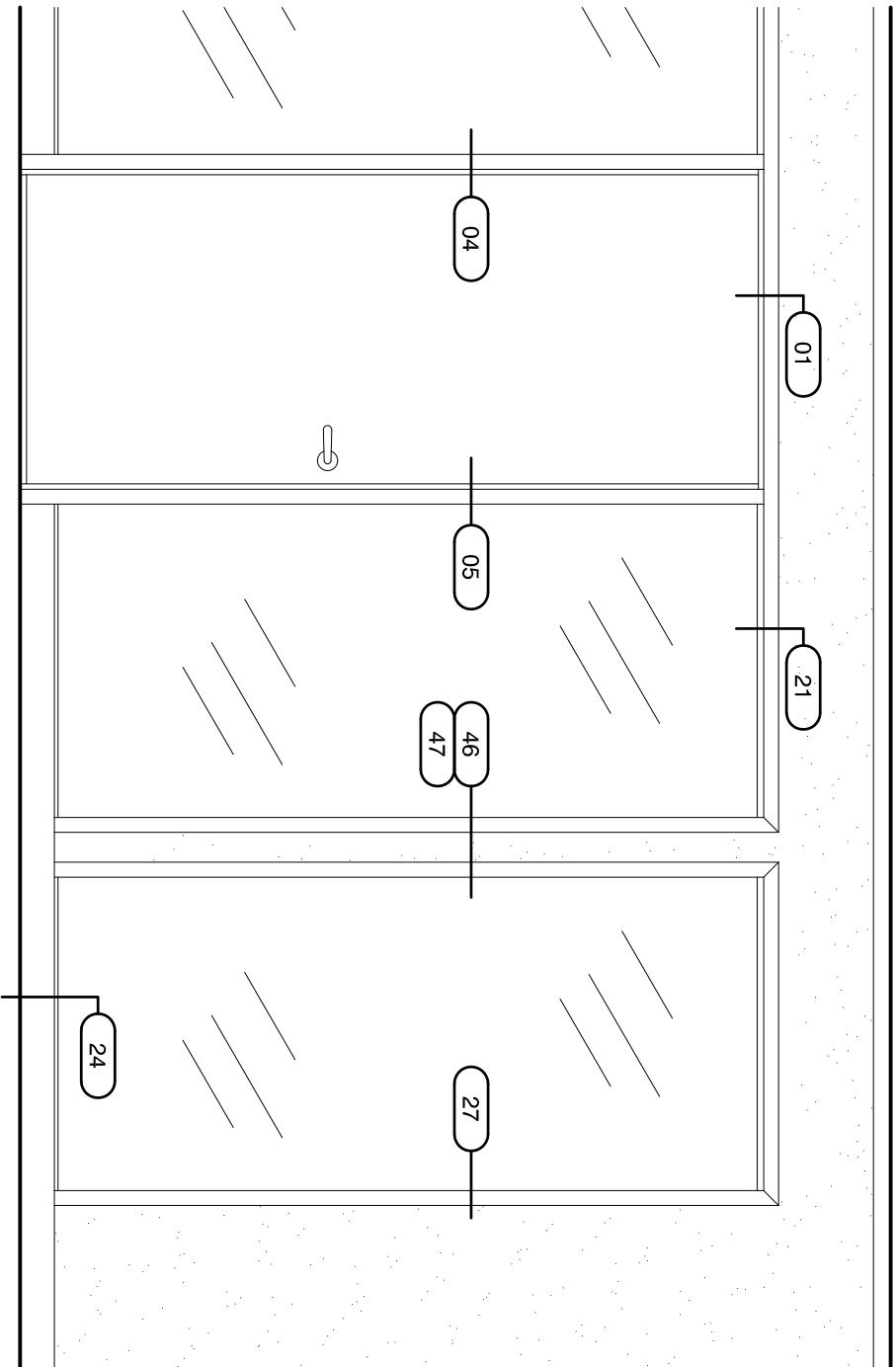


All Aluminum Door & Window Framing

Sample elevation - partial height door with glass transom  
Drawing code example: 81-1-01

Drawing No.

**81E-02**

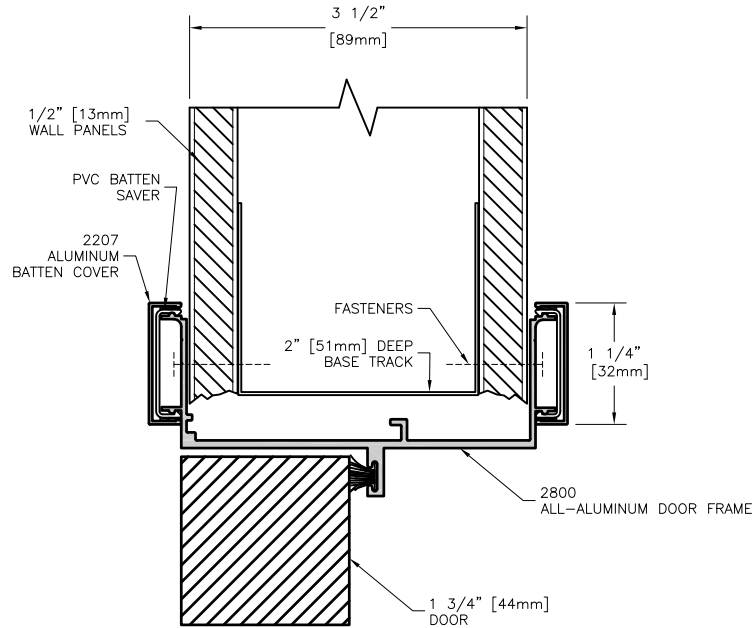


All Aluminum Door & Window Framing

Sample elevation - partial height door with solid transom  
Drawing code example: 81-1-01

Drawing No.

**81E-03**

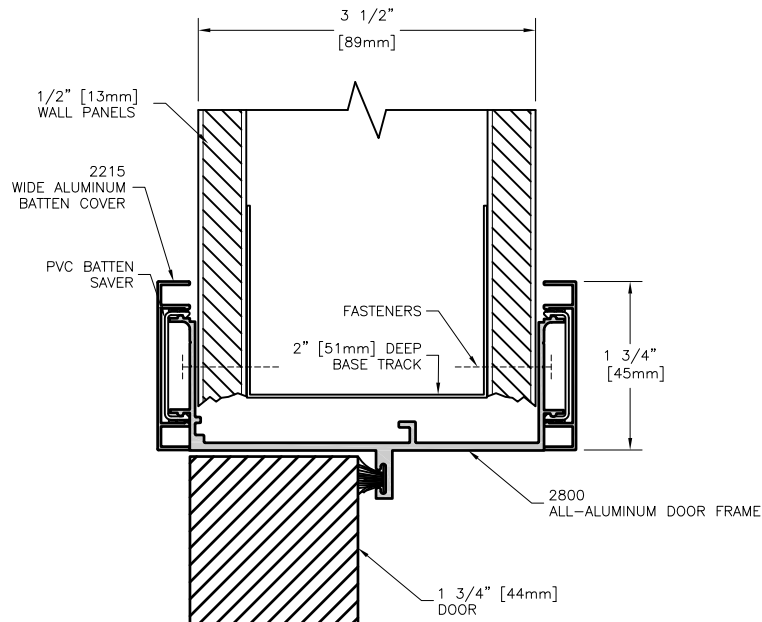


All-Aluminum Door & Window Framing for 3 1/2"

Hinged door panel, partial height - head detail  
(with aluminum batten covers)

Drawing No.

**81-1-01-01**

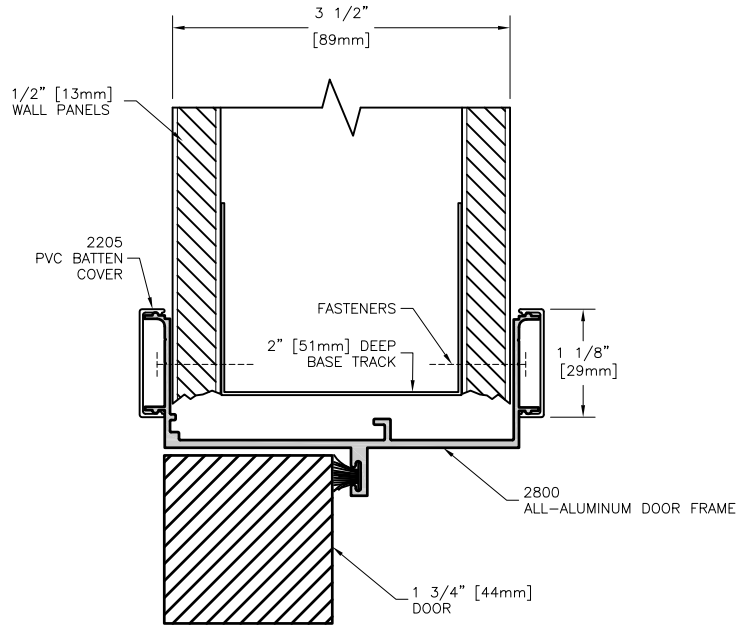


All-Aluminum Door & Window Framing for 3 1/2"

Hinged door panel, partial height - head detail  
(with wide aluminum batten covers)

Drawing No.

**81-1-01-02**

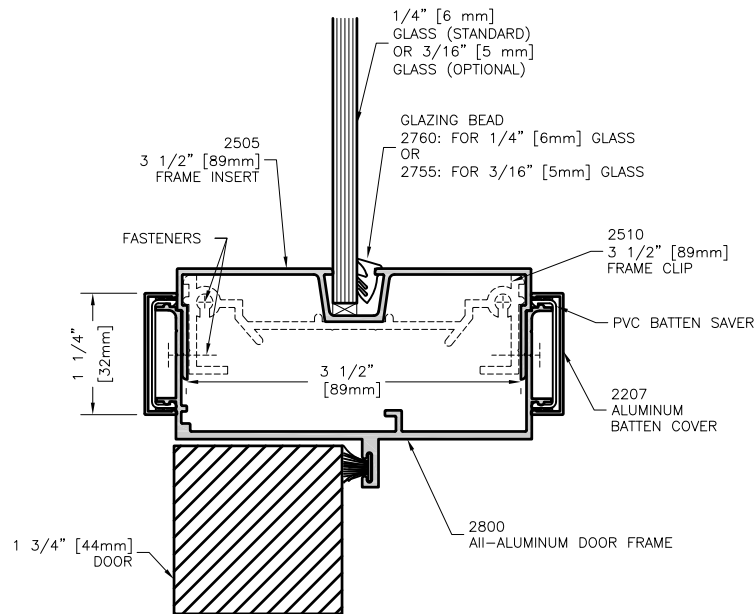


All-Aluminum Door & Window Framing for 3 1/2"

Hinged door panel, partial height - head detail  
(with PVC batten covers)

Drawing No.

**81-1-01-03**

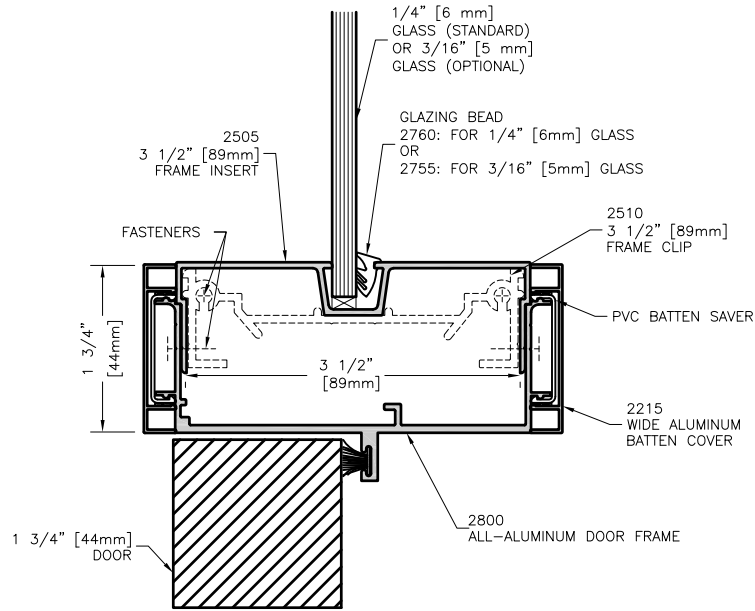


All-Aluminum Door & Window Framing for 3 1/2"

Hinged door panel at clerestory  
(with aluminum batten covers)

Drawing No.

**81-1-02-01**

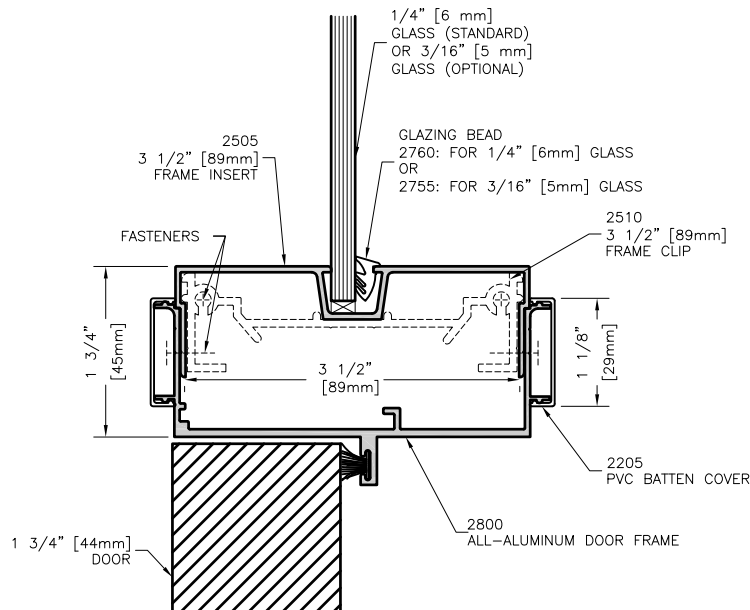


All-Aluminum Door & Window Framing for 3 1/2"

Hinged door panel at clerestory  
(with wide aluminum batten covers)

Drawing No.

**81-1-02-02**

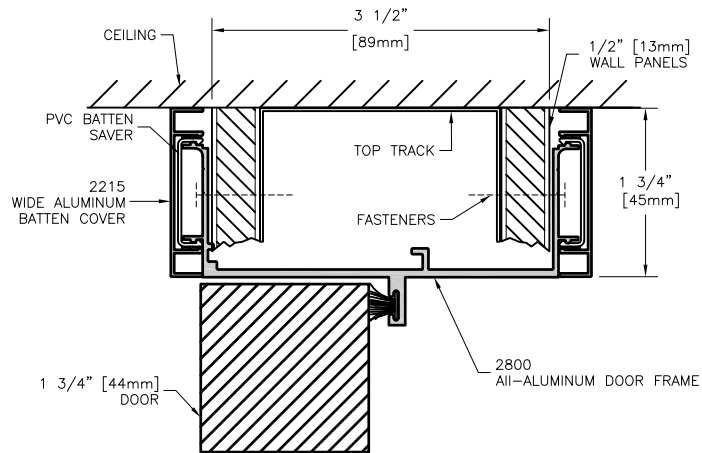


All-Aluminum Door & Window Framing for 3 1/2"

Hinged door panel at clerestory  
(with PVC batten covers)

Drawing No.

**81-1-02-03**

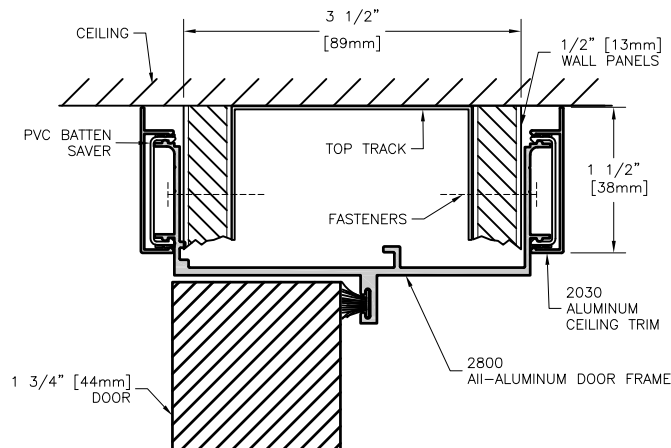


All-Aluminum Door & Window Framing for 3 1/2"

Hinged door panel, full height  
(with wide aluminum batten covers)

Drawing No.

**81-1-03-02**

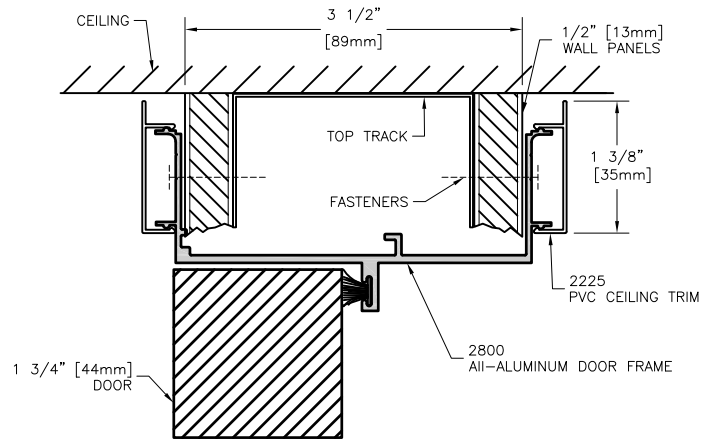


All-Aluminum Door & Window Framing for 3 1/2"

Hinged door panel, full height  
(with aluminum ceiling trim)

Drawing No.

**81-1-03-04**

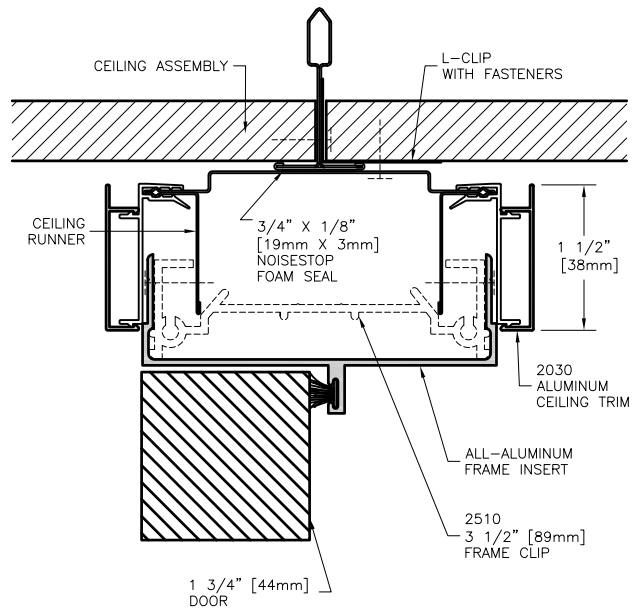


All-Aluminum Door & Window Framing for 3 1/2"

Hinged door panel, full height  
(with PVC ceiling trim)

Drawing No.

**81-1-03-05**



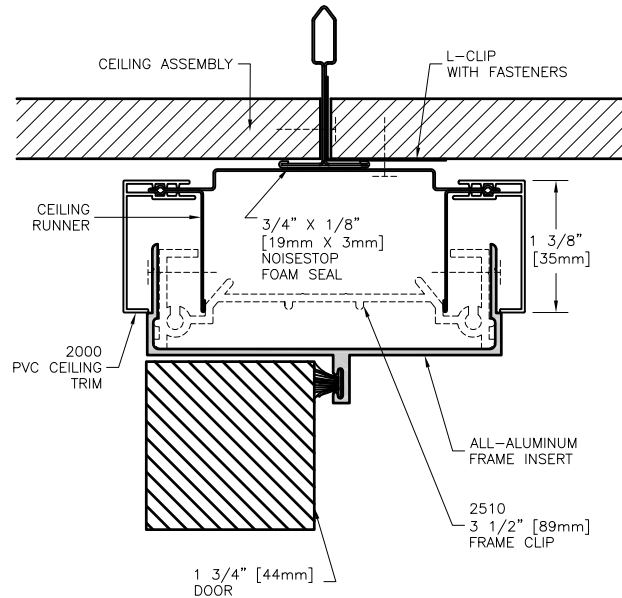
All-Aluminum Door & Window Framing for 3 1/2"

Hinged door panel, full height with steel ceiling runner  
(with aluminum ceiling trim)

Drawing No.

**81-1-03-04SCR**



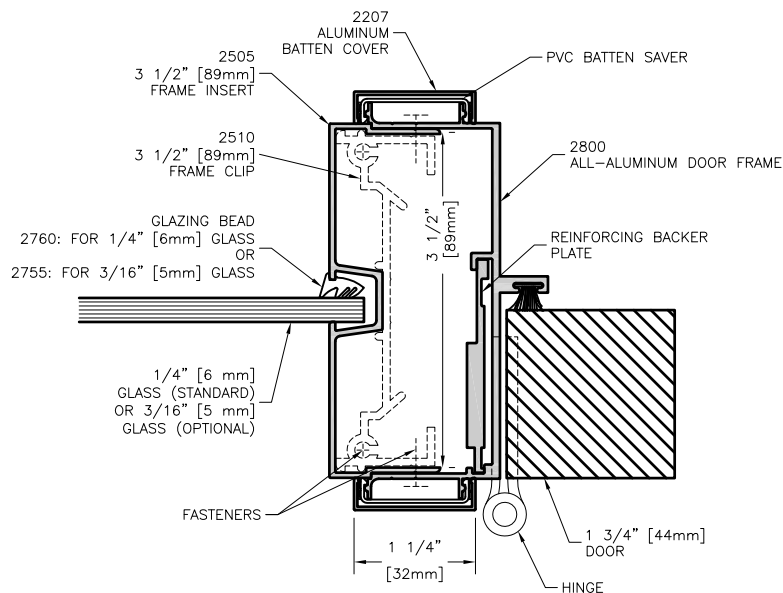


All-Aluminum Door & Window Framing for 3 1/2"

Hinged door panel, full height with steel ceiling runner  
(with PVC ceiling trim)

Drawing No.

**81-1-03-05SCR**

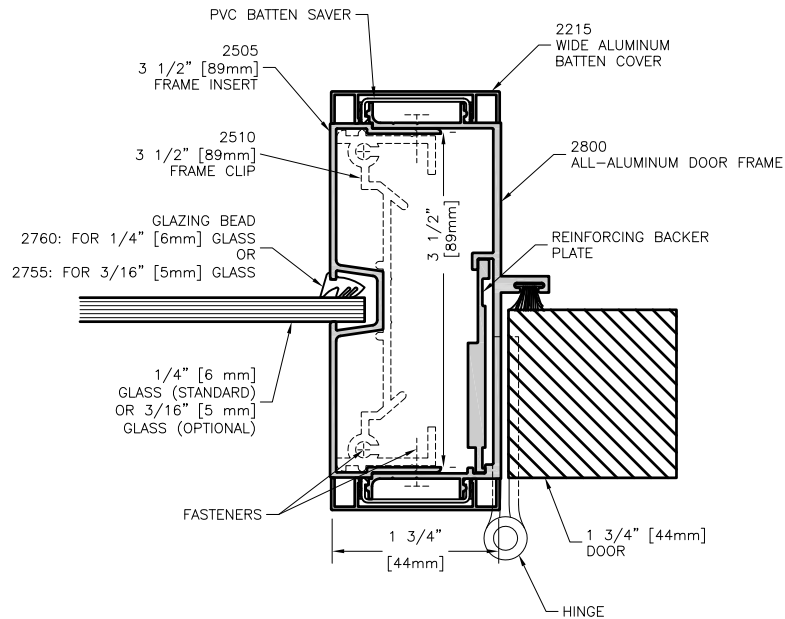


All-Aluminum Door & Window Framing for 3 1/2"

Hinged door at sidelight - hinge side  
(with aluminum batten covers)

Drawing No.

**81-1-04-01**

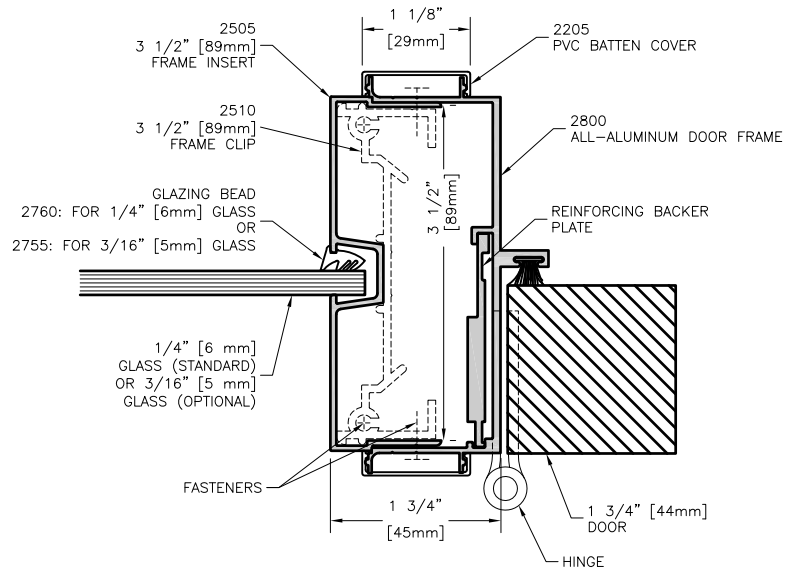


All-Aluminum Door & Window Framing for 3 1/2"

Hinged door at sidelight - hinge side  
(with wide aluminum batten covers)

Drawing No.

**81-1-04-02**

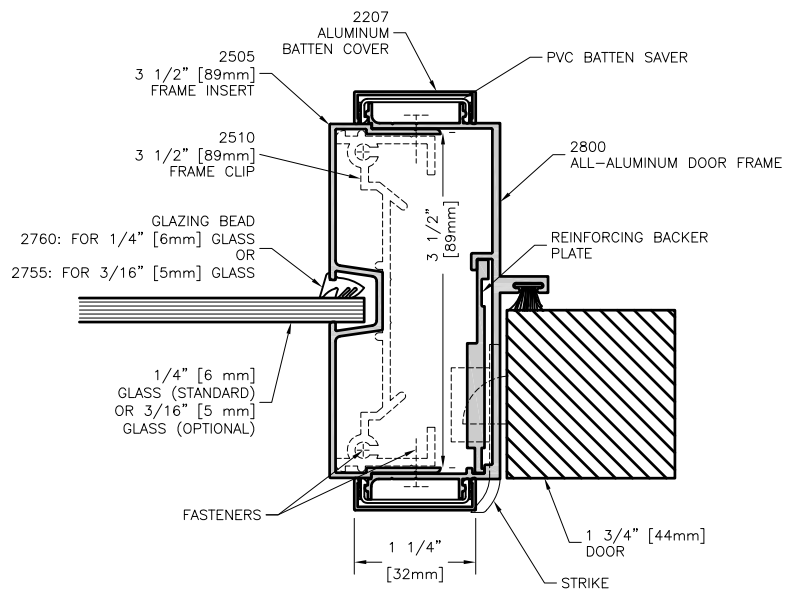


All-Aluminum Door & Window Framing for 3 1/2"

Hinged door at sidelight - hinge side  
(with PVC batten covers)

Drawing No.

**81-1-04-03**

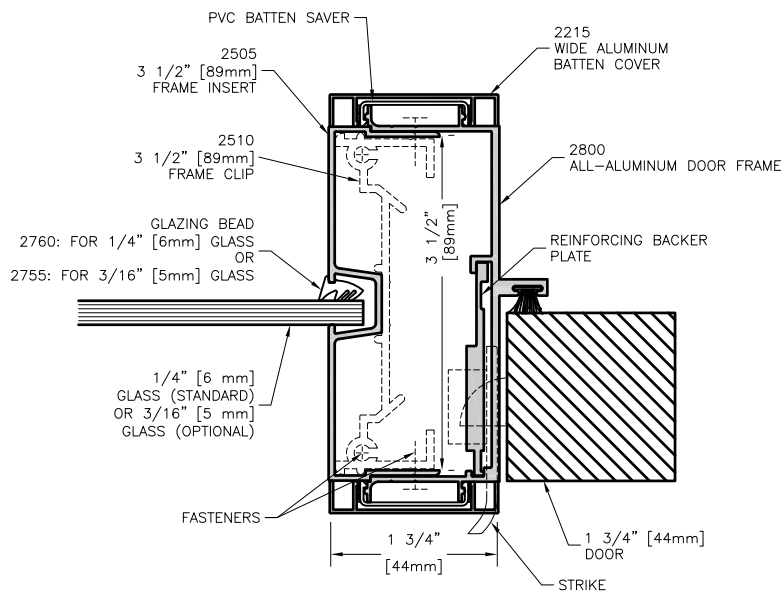


All-Aluminum Door & Window Framing for 3 1/2"

Hinged door at sidelight - strike side  
(with aluminum batten covers)

Drawing No.

**81-1-05-01**

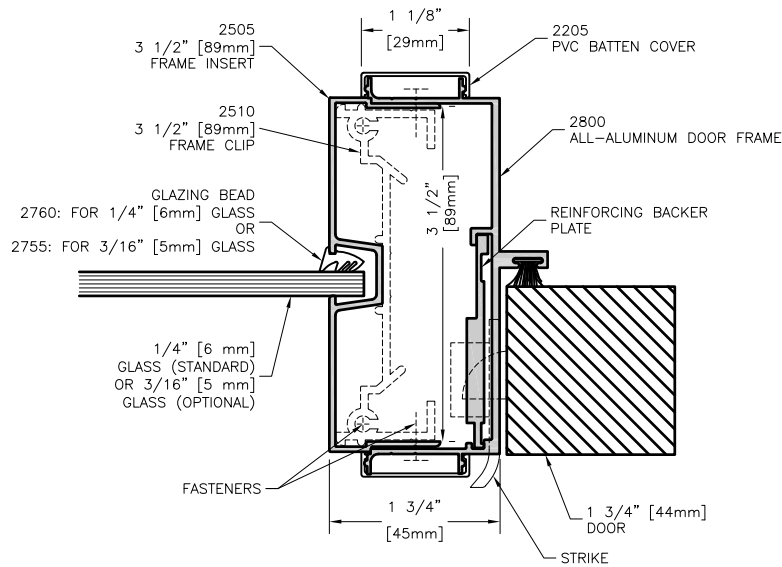


All-Aluminum Door & Window Framing for 3 1/2"

Hinged door at sidelight - strike side  
(with wide aluminum batten covers)

Drawing No.

**81-1-05-02**

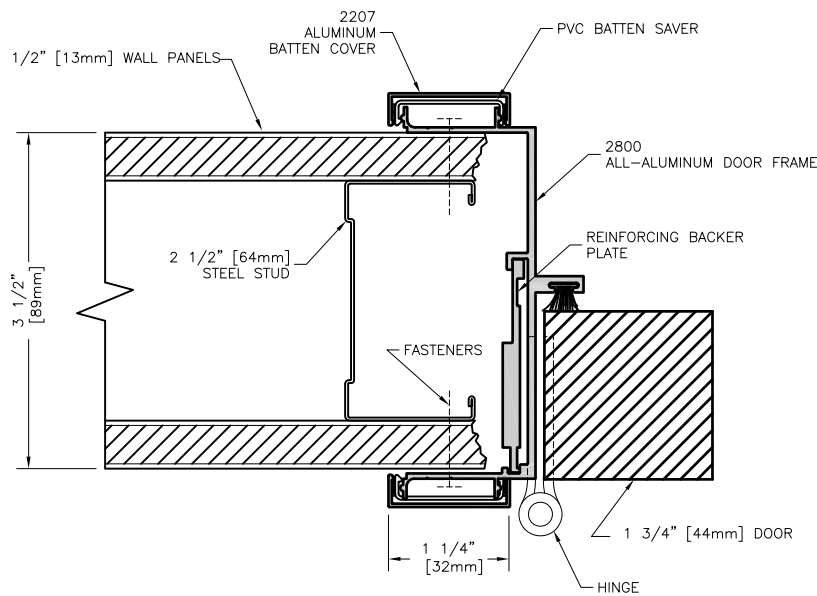


All-Aluminum Door & Window Framing for 3 1/2"

Hinged door at sidelight - strike side  
(with PVC batten covers)

Drawing No.

**81-1-05-03**

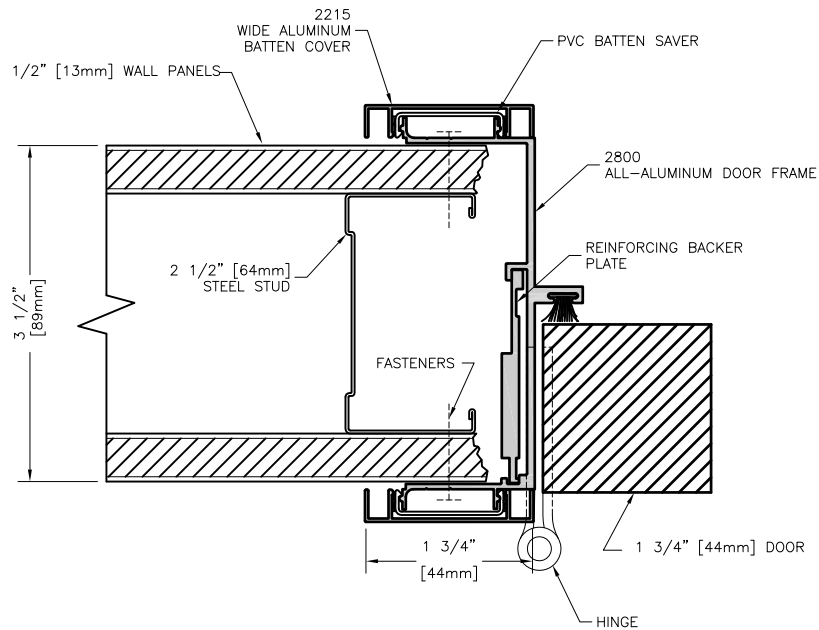


All-Aluminum Door & Window Framing for 3 1/2"

Hinged door at solid panel - hinge side  
(with aluminum batten covers)

Drawing No.

**81-1-06-01**

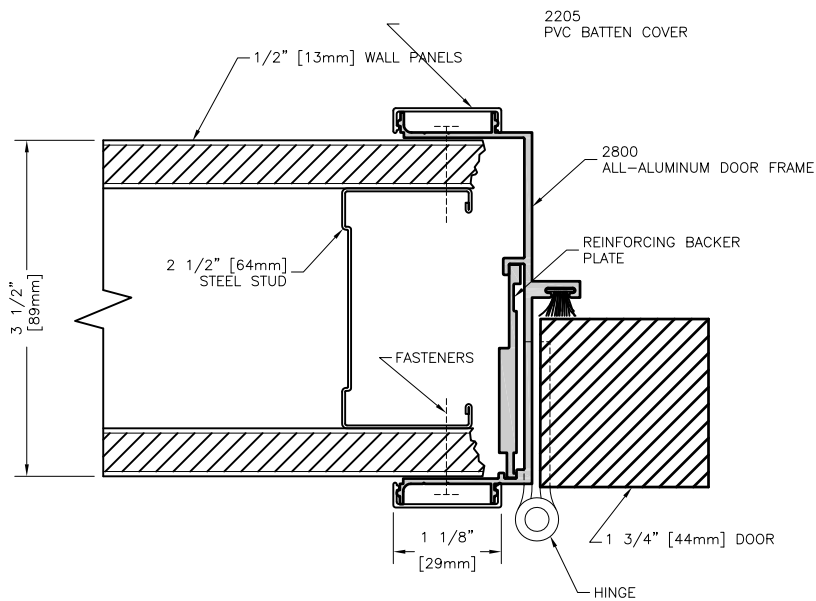


All-Aluminum Door & Window Framing for 3 1/2"

Hinged door at solid panel - hinge side  
(with wide aluminum batten covers)

Drawing No.

**81-1-06-02**

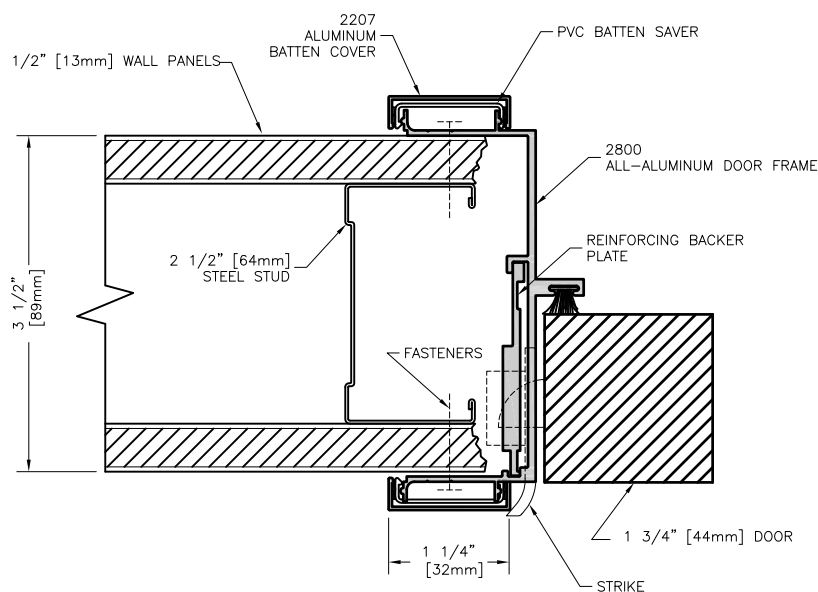


All-Aluminum Door & Window Framing for 3 1/2"

Hinged door at solid panel - hinge side  
(with PVC batten covers)

Drawing No.

**81-1-06-03**

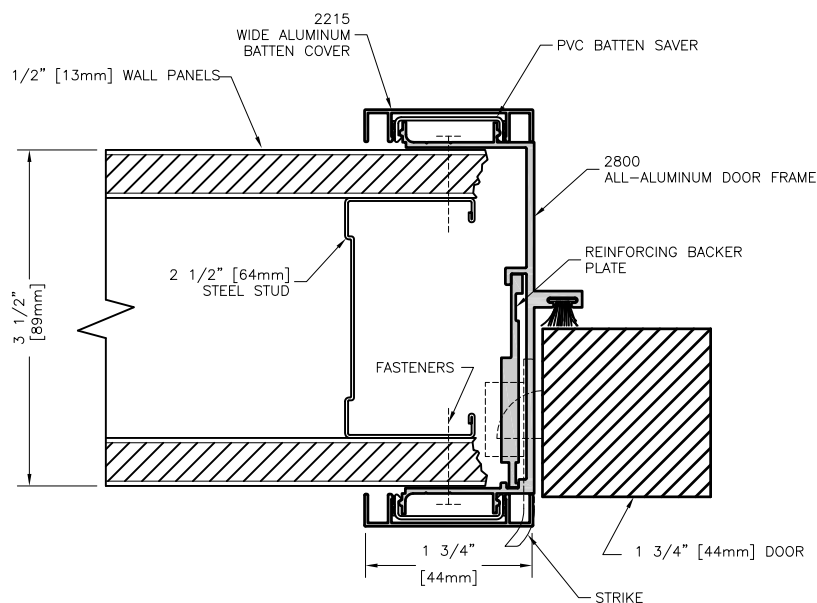


All-Aluminum Door & Window Framing for 3 1/2"

Hinged door at solid panel - strike side  
(with aluminum batten covers)

Drawing No.

**81-1-07-01**

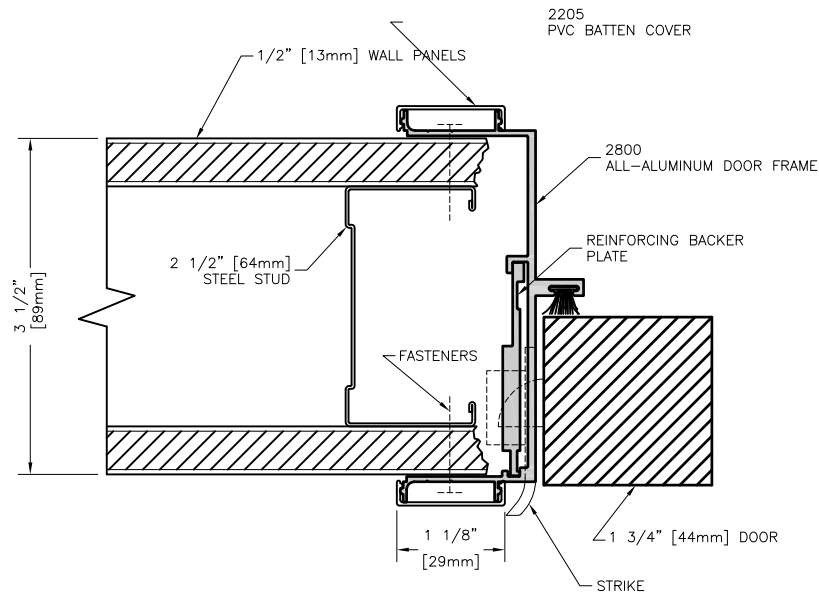


All-Aluminum Door & Window Framing for 3 1/2"

Hinged door at solid panel - strike side  
(with wide aluminum batten covers)

Drawing No.

**81-1-07-02**

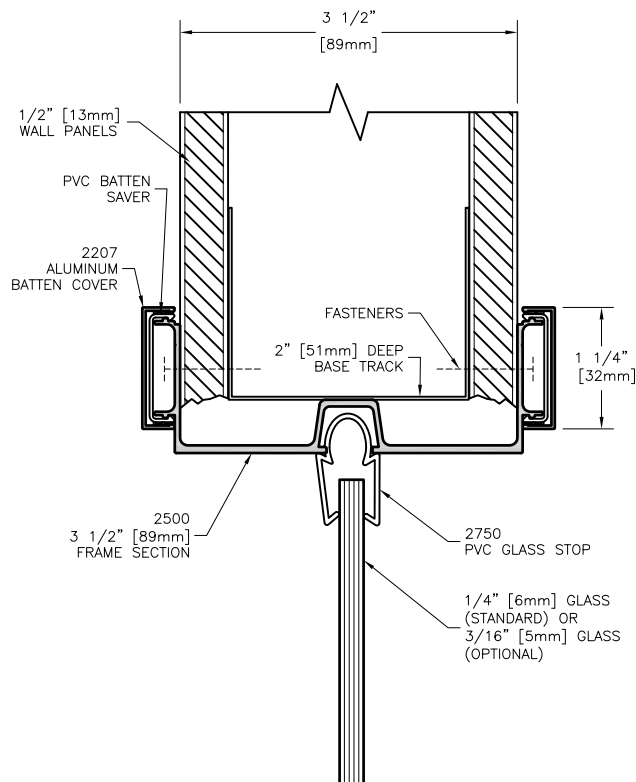


All-Aluminum Door & Window Framing for 3 1/2"

Hinged door at solid panel - strike side  
(with PVC batten covers)

Drawing No.

**81-1-07-03**

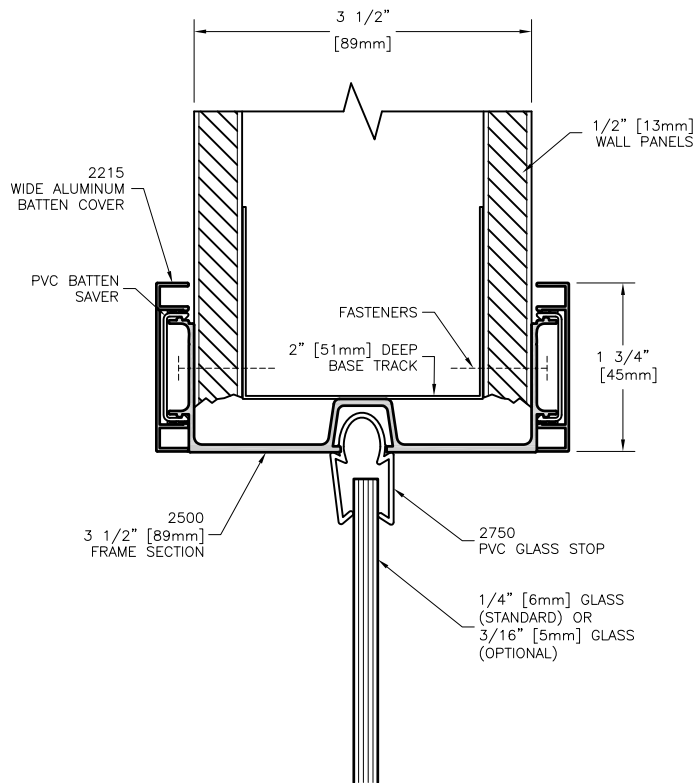


All-Aluminum Door & Window Framing for 3 1/2"

Partial height glazing - head detail  
(with aluminum batten covers)

Drawing No.

**81-1-21-01**

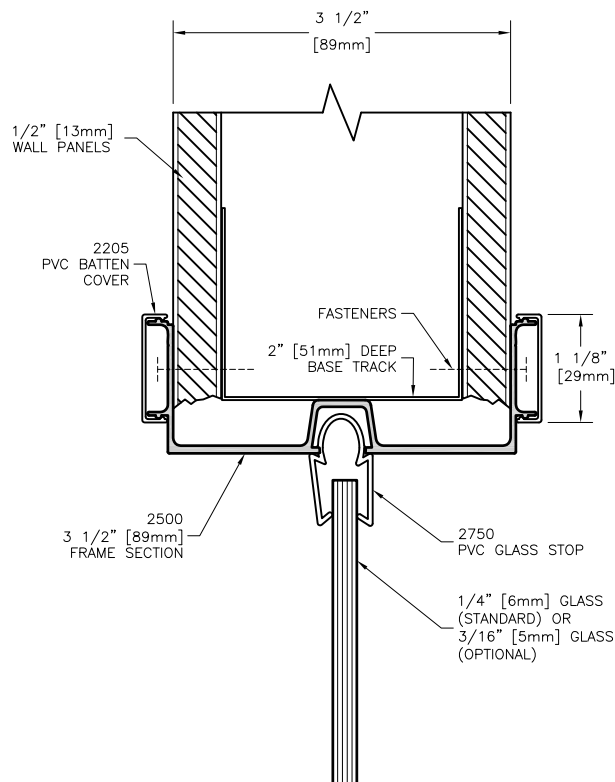


All-Aluminum Door & Window Framing for 3 1/2"

Partial height glazing - head detail  
(with wide aluminum batten covers)

Drawing No.

**81-1-21-02**



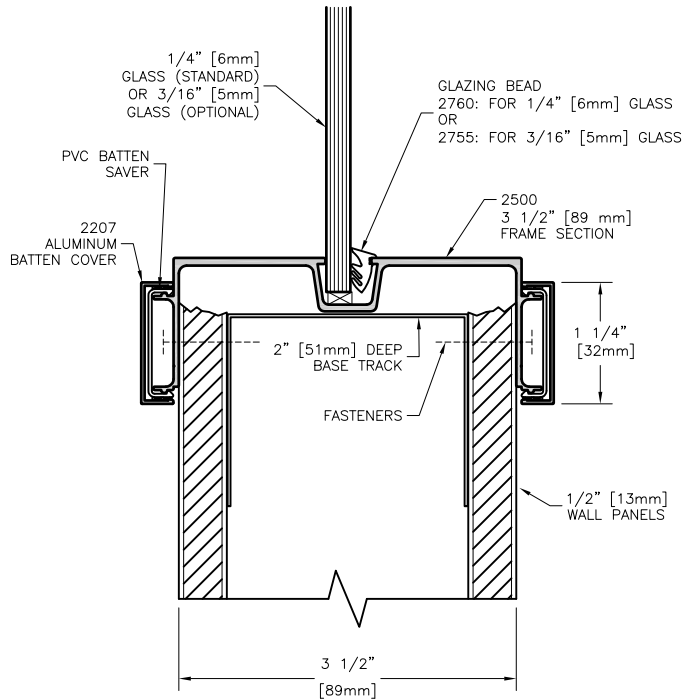
All-Aluminum Door & Window Framing for 3 1/2"

Partial height glazing - head detail  
(with PVC batten covers)

Drawing No.

**81-1-21-03**



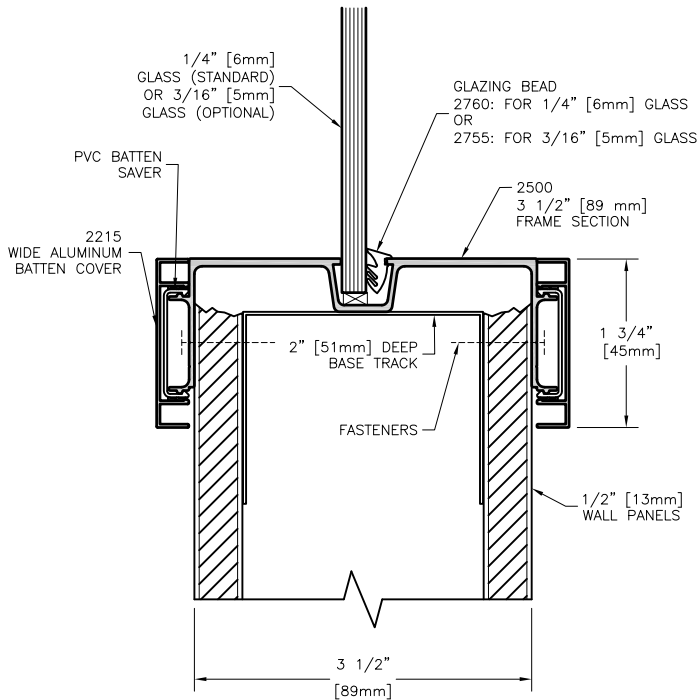


All-Aluminum Door & Window Framing for 3 1/2"

Partial height glazing - sill detail  
(with aluminum batten covers)

Drawing No.

**81-1-22-01**

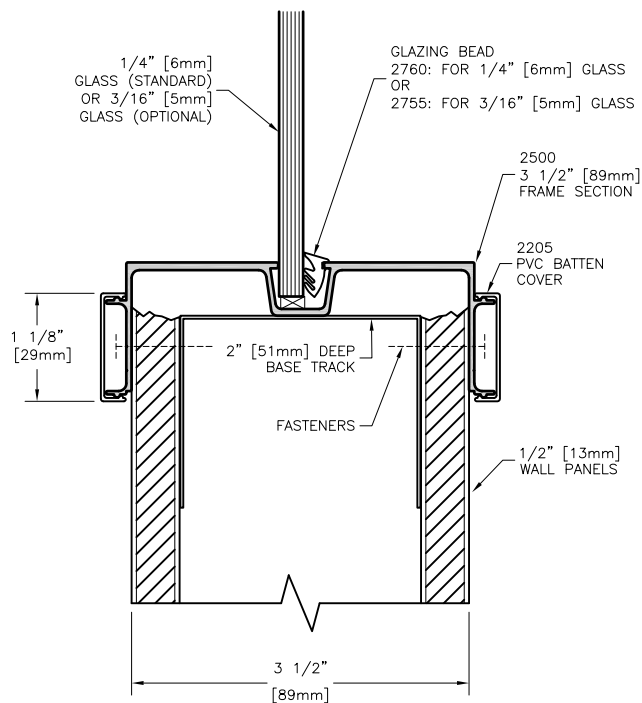


All-Aluminum Door & Window Framing for 3 1/2"

Partial height glazing - sill detail  
(with wide aluminum batten covers)

Drawing No.

**81-1-22-02**

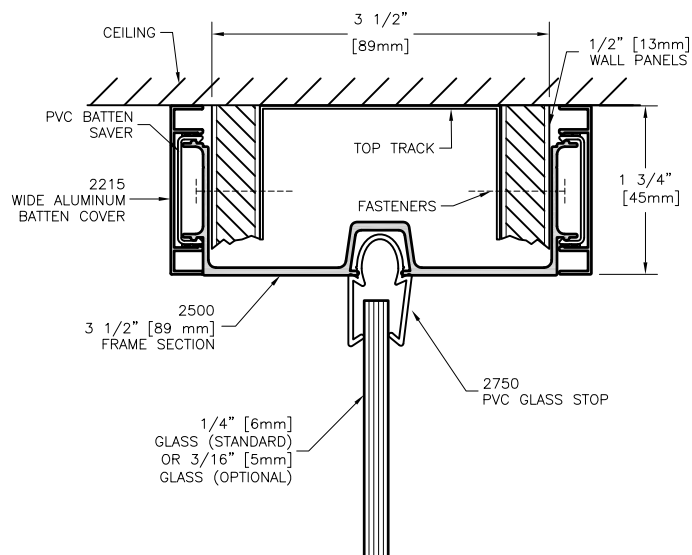


All-Aluminum Door & Window Framing for 3 1/2"

Partial height glazing - sill detail  
(with PVC batten covers)

Drawing No.

**81-1-22-03**

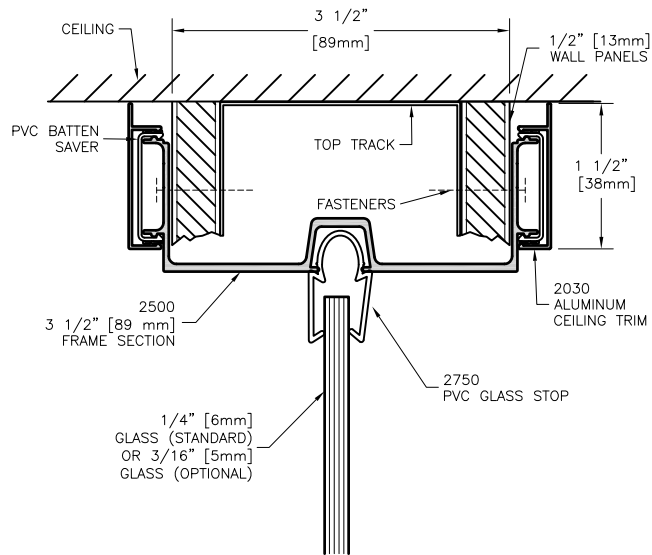


All-Aluminum Door & Window Framing for 3 1/2"

Full height glazing  
(with wide aluminum batten covers)

Drawing No.

**81-1-23-02**

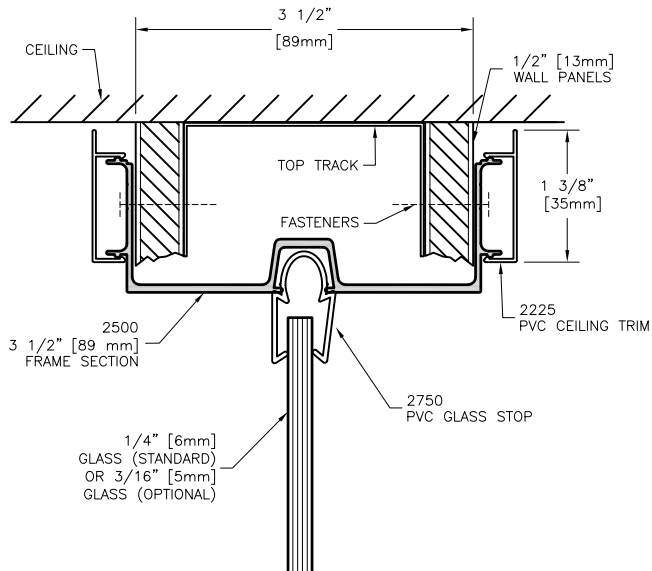


All-Aluminum Door & Window Framing for 3 1/2"

Full height glazing  
(with aluminum ceiling trim)

Drawing No.

**81-1-23-04**

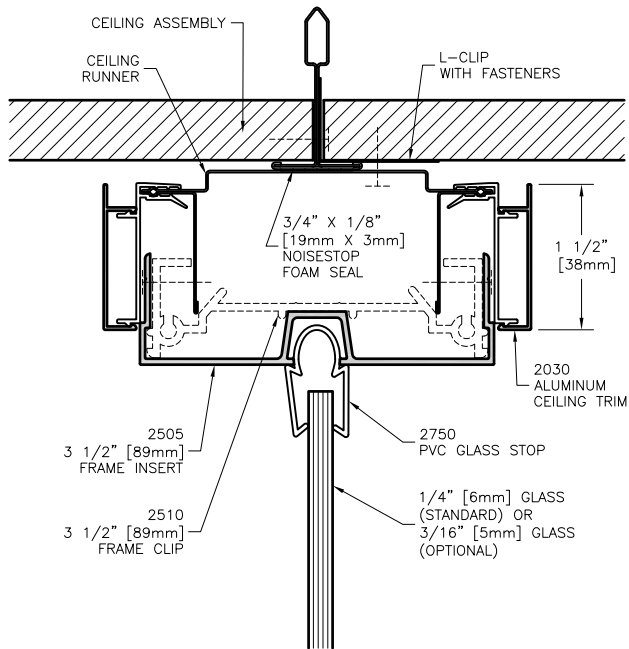


All-Aluminum Door & Window Framing for 3 1/2"

Full height glazing  
(with PVC ceiling trim)

Drawing No.

**81-1-23-05**

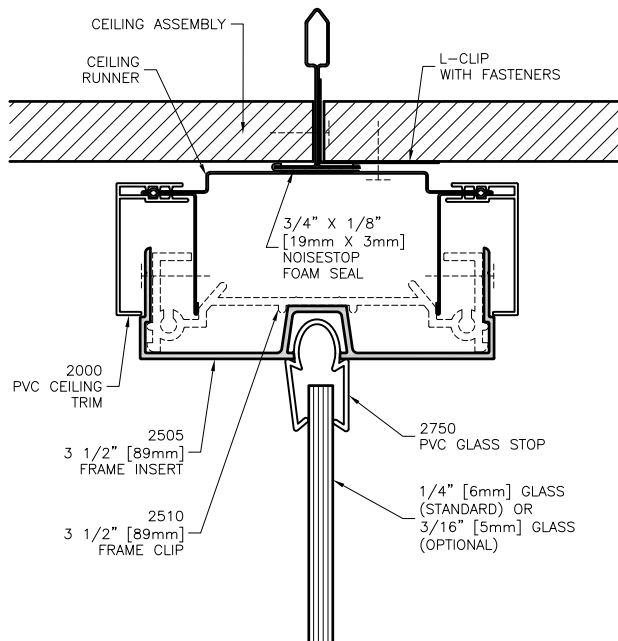


All-Aluminum Door & Window Framing for 3 1/2"

Full height glazing with steel ceiling runner  
(with aluminum ceiling trim)

Drawing No.

**81-1-23-04SCR**

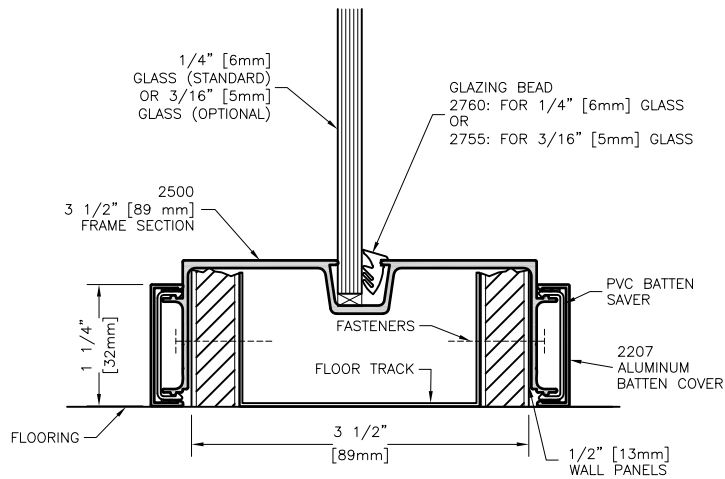


All-Aluminum Door & Window Framing for 3 1/2"

Full height glazing with steel ceiling runner  
(with PVC ceiling trim)

Drawing No.

**81-1-23-05SCR**

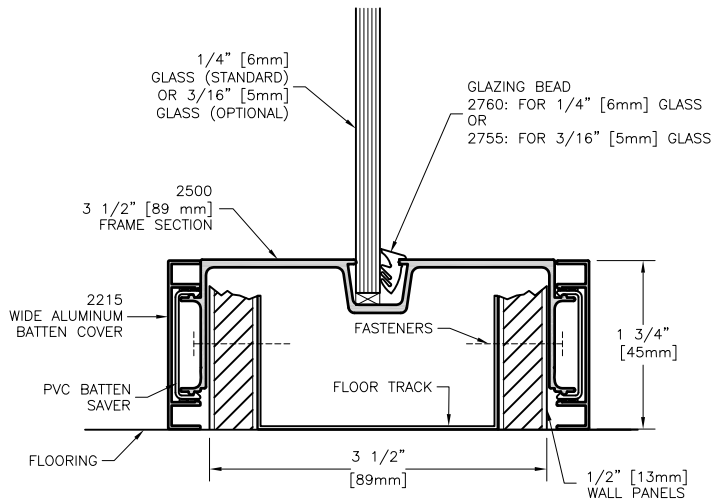


All-Aluminum Door & Window Framing for 3 1/2"

Glazing at floor  
(with aluminum batten covers)

Drawing No.

**81-1-24-01**

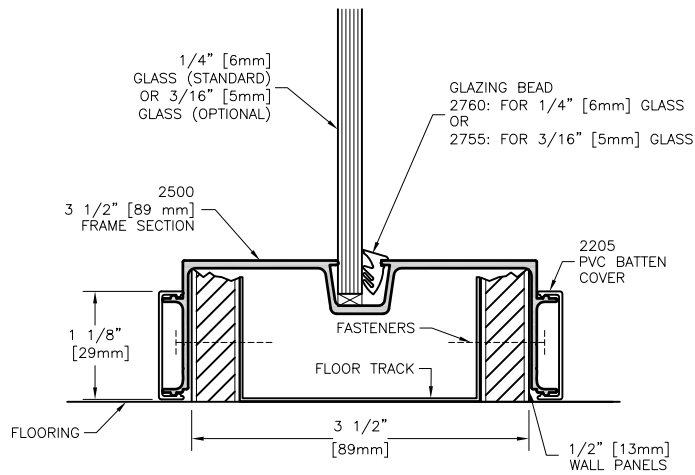


All-Aluminum Door & Window Framing for 3 1/2"

Glazing at floor  
(with wide aluminum batten covers)

Drawing No.

**81-1-24-02**

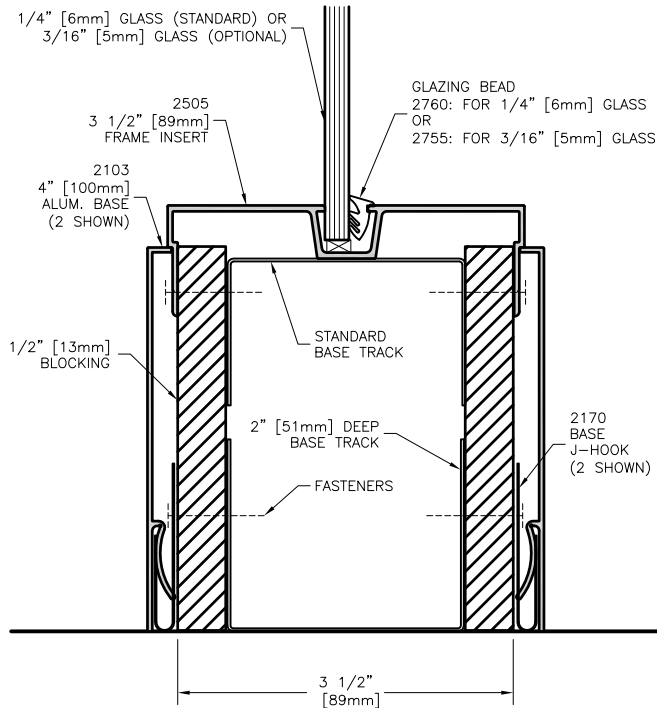


All-Aluminum Door & Window Framing for 3 1/2"

Glazing at floor  
(with PVC batten covers)

Drawing No.

**81-1-24-03**

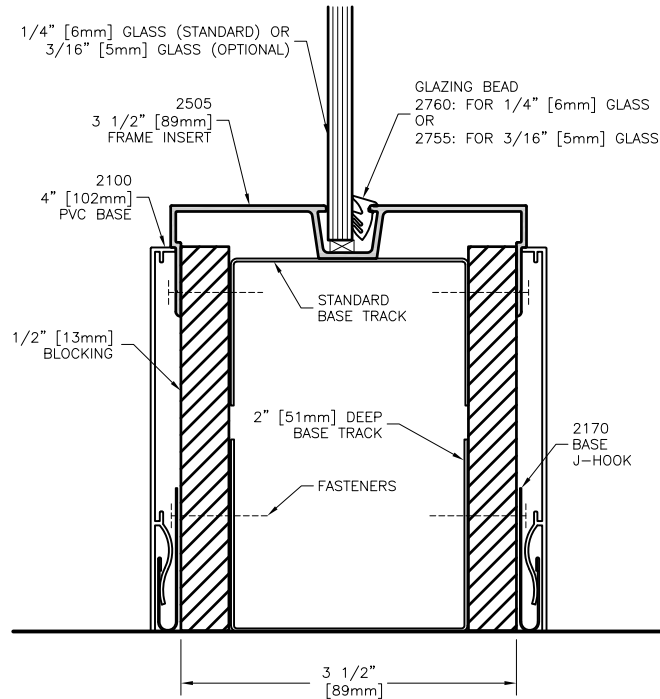


All-Aluminum Door & Window Framing for 3 1/2"

Glazing at floor  
(with aluminum base)

Drawing No.

**81-1-24-06**

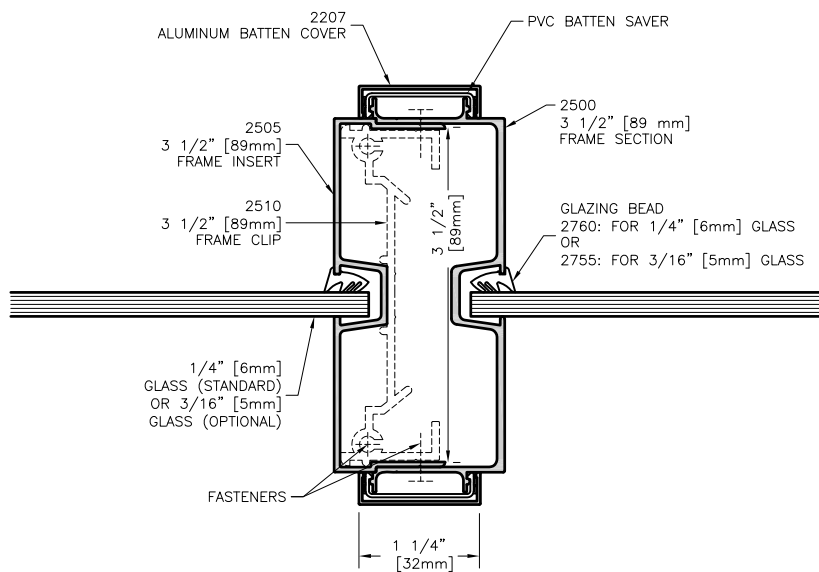


All-Aluminum Door & Window Framing for 3 1/2"

Glazing at floor  
(with PVC base)

Drawing No.

**81-1-24-07**

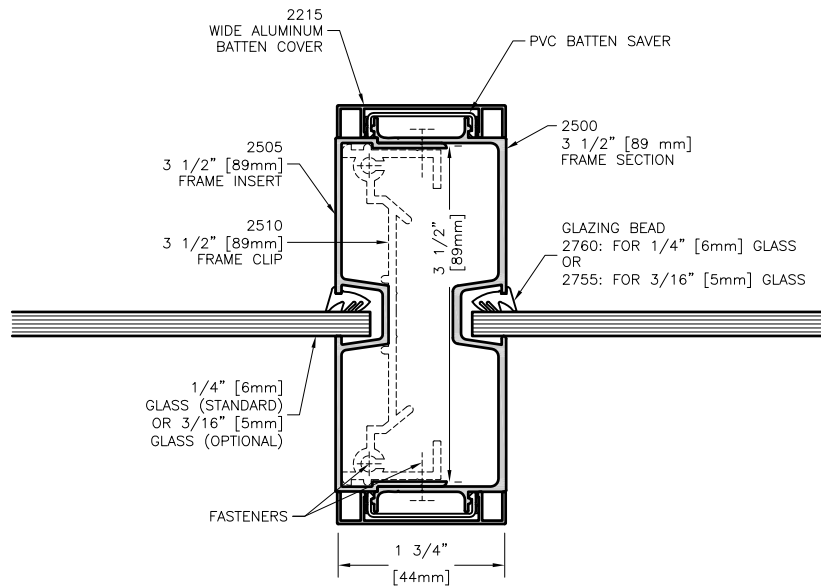


All-Aluminum Door & Window Framing for 3 1/2"

2-way glass section - vertical mullion  
(with aluminum batten covers)

Drawing No.

**81-1-25-01**

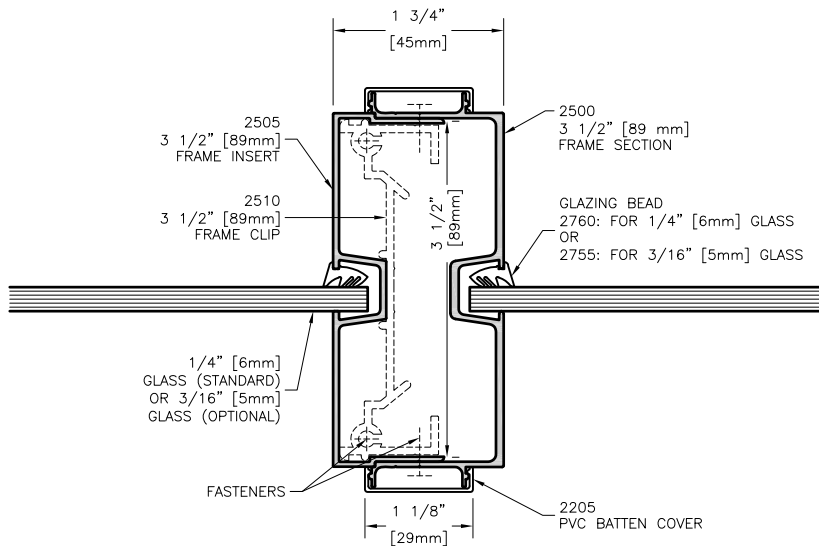


All-Aluminum Door & Window Framing for 3 1/2"

2-way glass section - vertical mullion  
(with wide aluminum batten covers)

Drawing No.

**81-1-25-02**



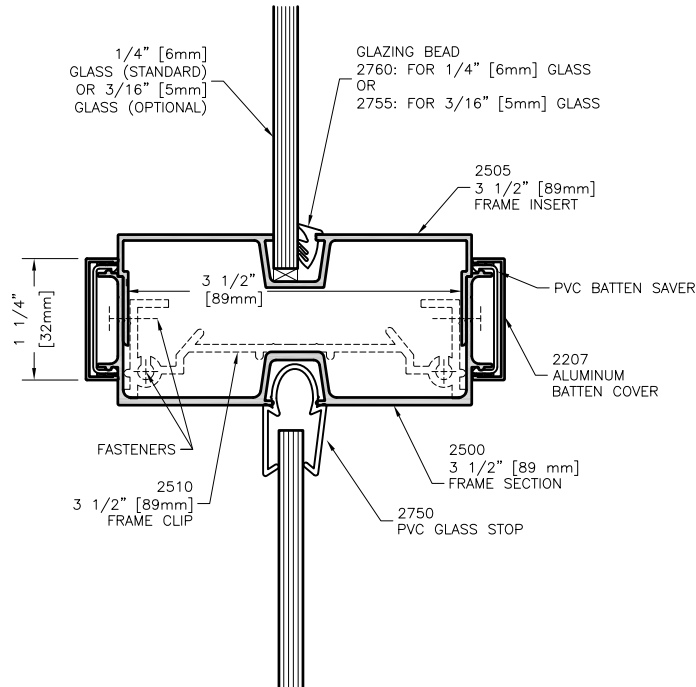
All-Aluminum Door & Window Framing for 3 1/2"

2-way glass section - vertical mullion  
(with PVC batten covers)

Drawing No.

**81-1-25-03**



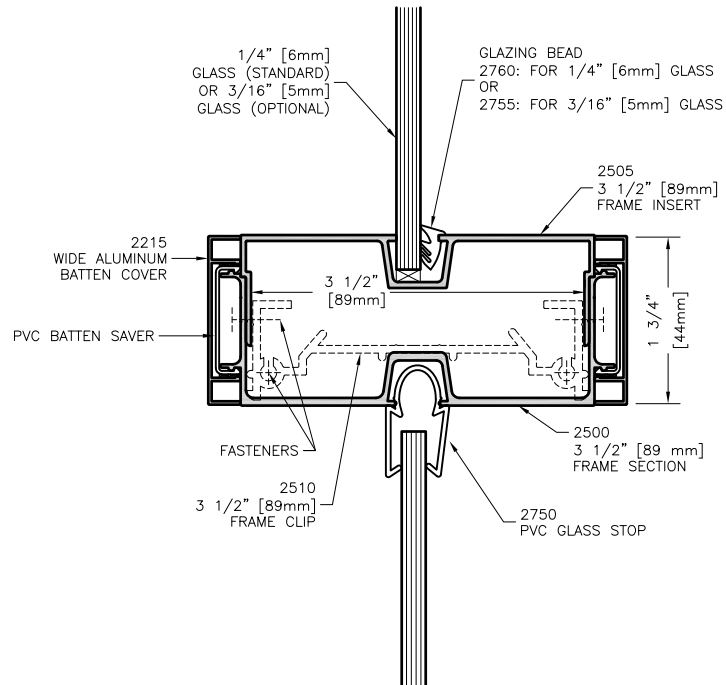


All-Aluminum Door & Window Framing for 3 1/2"

2-way glass section - horizontal mullion  
(with aluminum batten covers)

Drawing No.

**81-1-26-01**

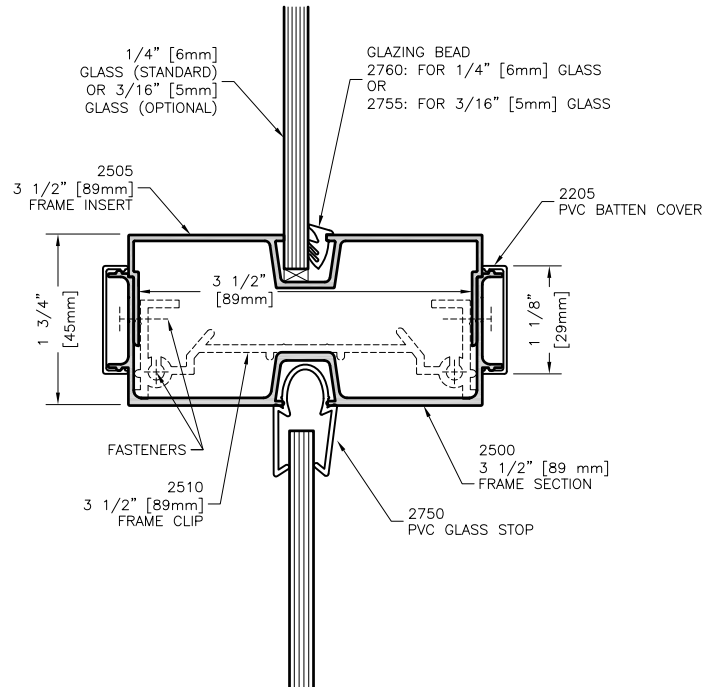


All-Aluminum Door & Window Framing for 3 1/2"

2-way glass section - horizontal mullion  
(with wide aluminum batten covers)

Drawing No.

**81-1-26-02**

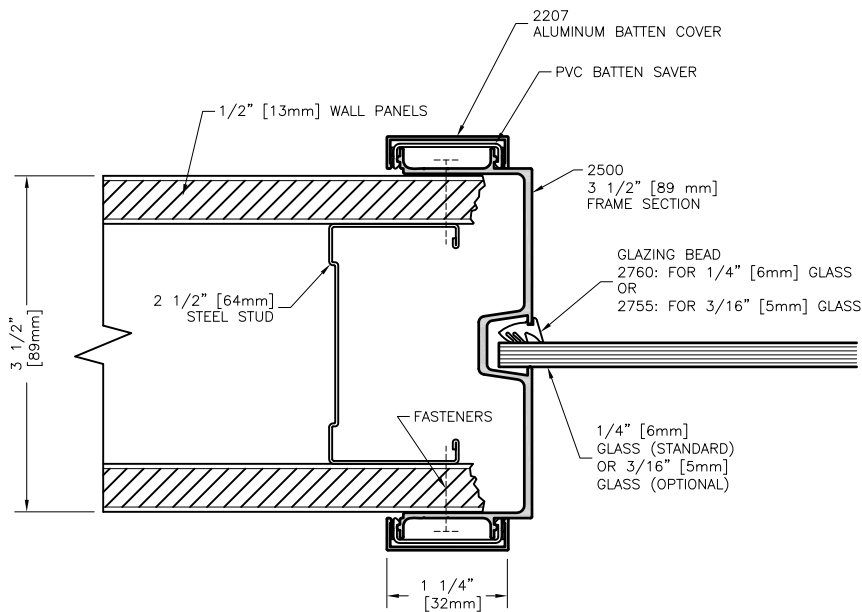


All-Aluminum Door & Window Framing for 3 1/2"

2-way glass section - horizontal mullion  
(with PVC batten covers)

Drawing No.

**81-1-26-03**

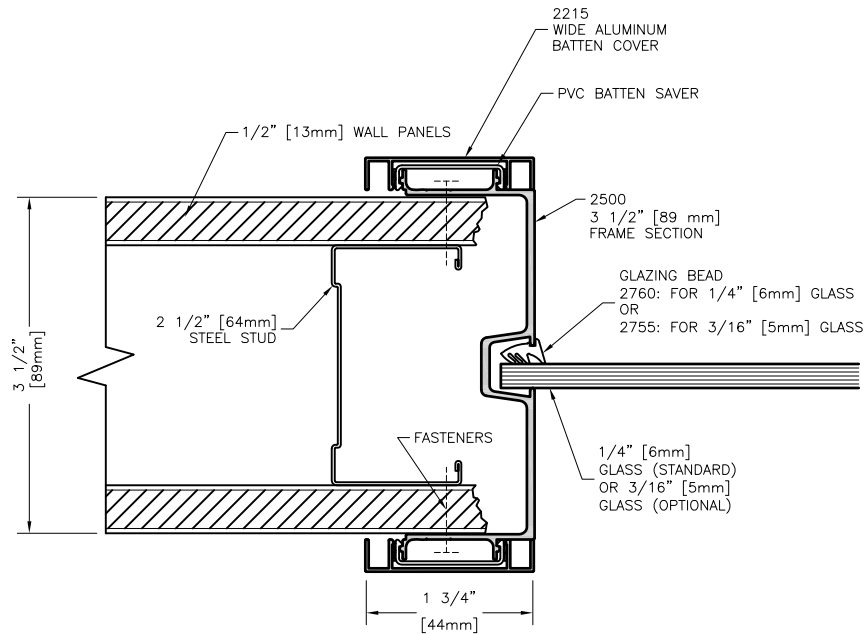


All-Aluminum Door & Window Framing for 3 1/2"

Solid panel at glazing jamb - horizontal section  
(with aluminum batten covers)

Drawing No.

**81-1-27-01**

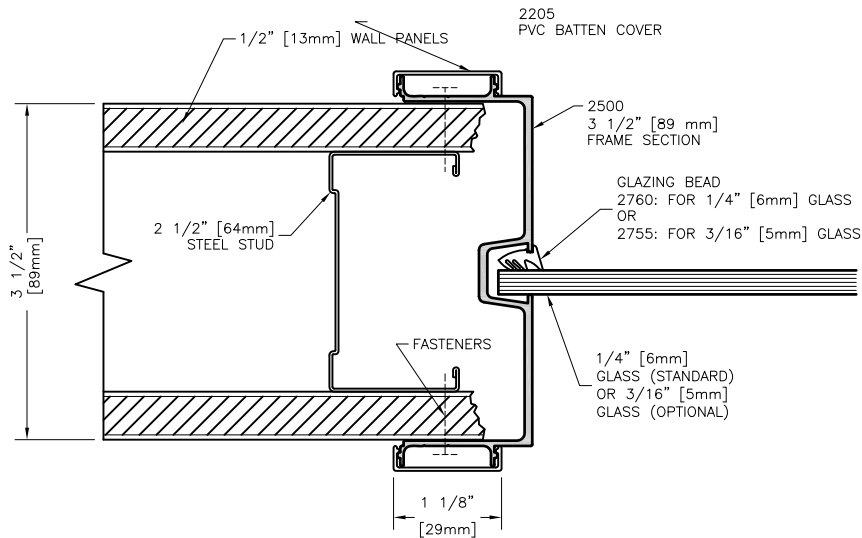


All-Aluminum Door & Window Framing for 3 1/2"

Solid panel at glazing jamb - horizontal section  
(with wide aluminum batten covers)

Drawing No.

**81-1-27-02**

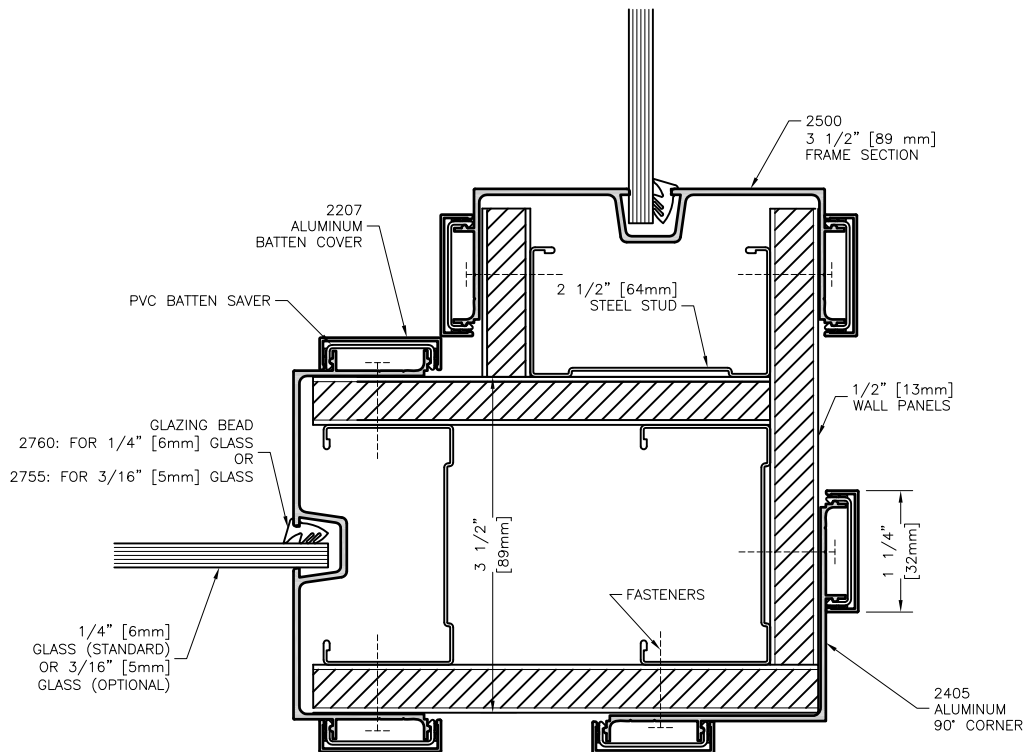


All-Aluminum Door & Window Framing for 3 1/2"

Solid panel at glazing jamb - horizontal section  
(with PVC batten covers)

Drawing No.

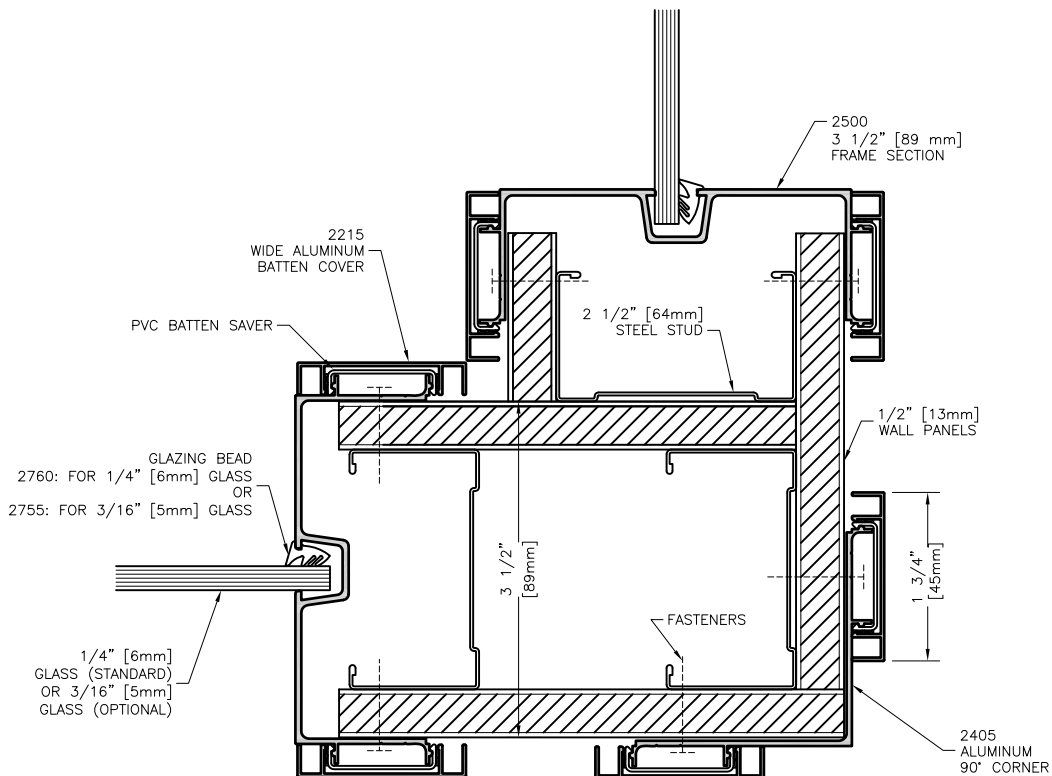
**81-1-27-03**



All-Aluminum Door & Window Framing for 3 1/2"  
90° glass-glass corner  
(with aluminum batten covers)

Drawing No.

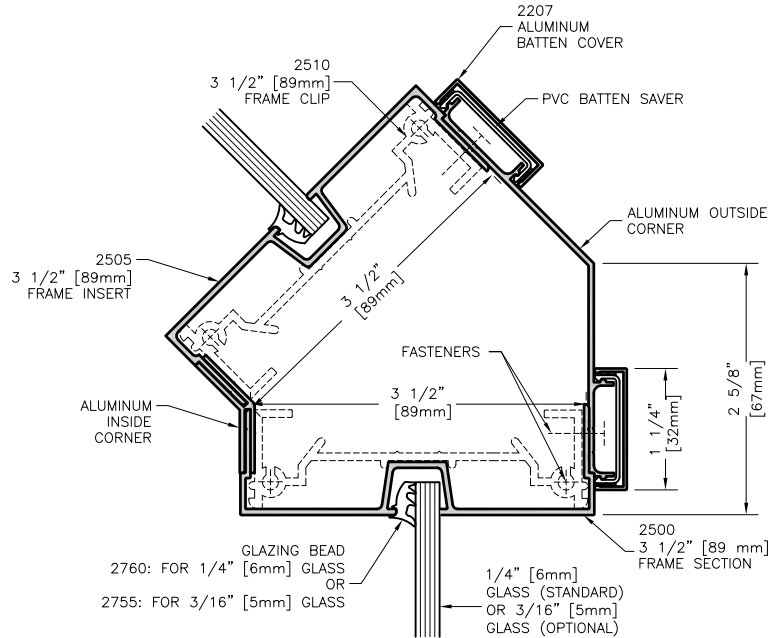
**81-1-41-01**



All-Aluminum Door & Window Framing for 3 1/2"  
90° glass-glass corner  
(with wide aluminum batten covers)

Drawing No.

**81-1-41-02**

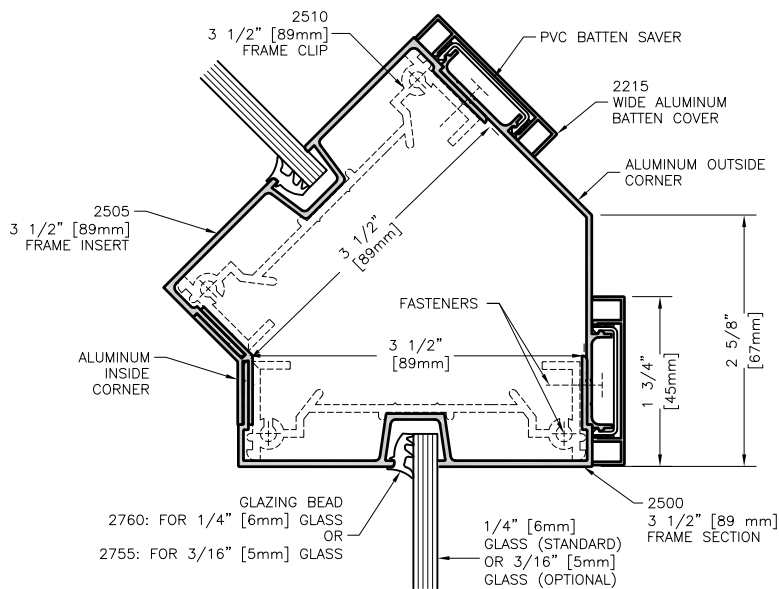


All-Aluminum Door & Window Framing for 3 1/2"

135° glass-glass corner  
(with aluminum batten covers)

Drawing No.

**81-1-45-01**

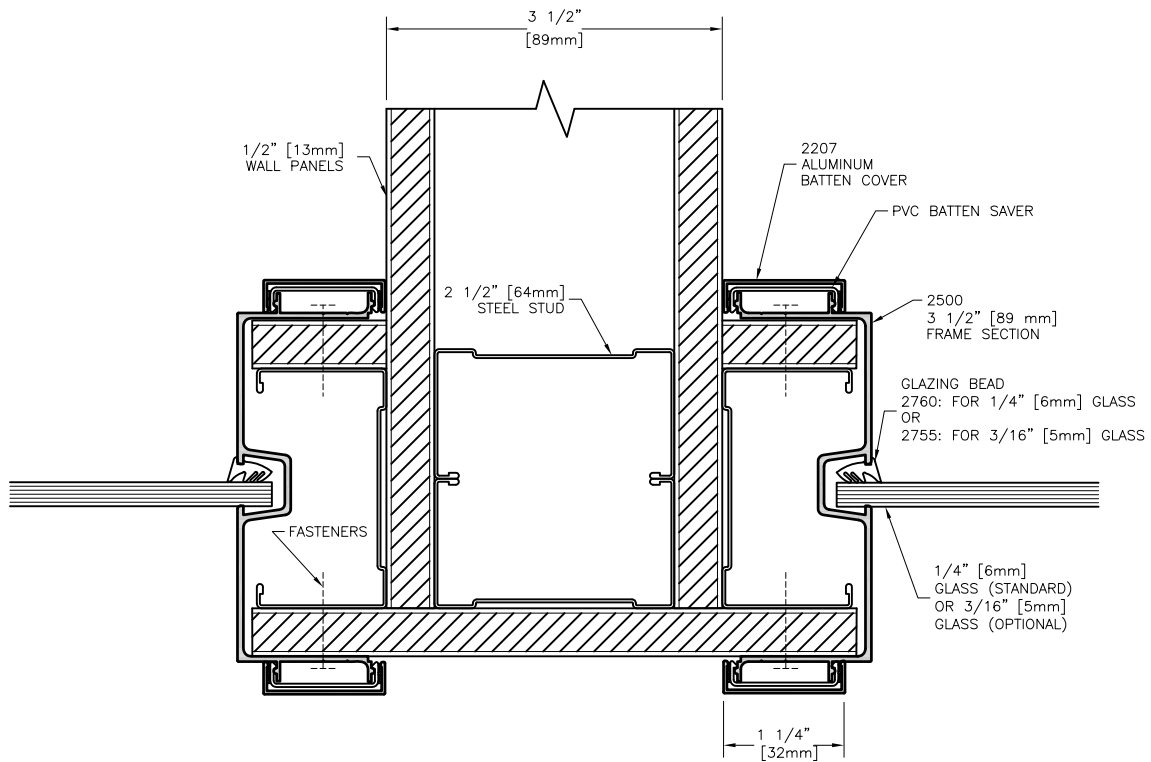


All-Aluminum Door & Window Framing for 3 1/2"

135° glass-glass corner  
(with wide aluminum batten covers)

Drawing No.

**81-1-45-02**

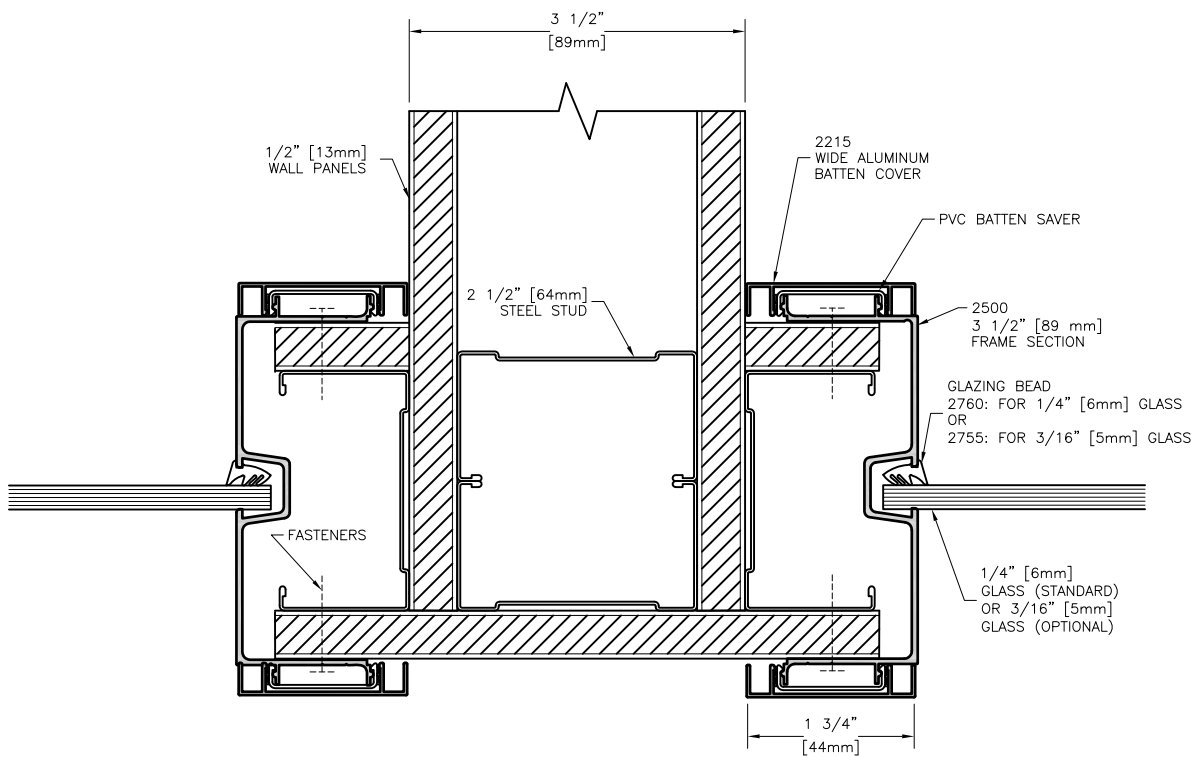


All-Aluminum Door & Window Framing for 3 1/2"

2-way T junction  
(with aluminum batten covers)

Drawing No.

**81-1-46-01**

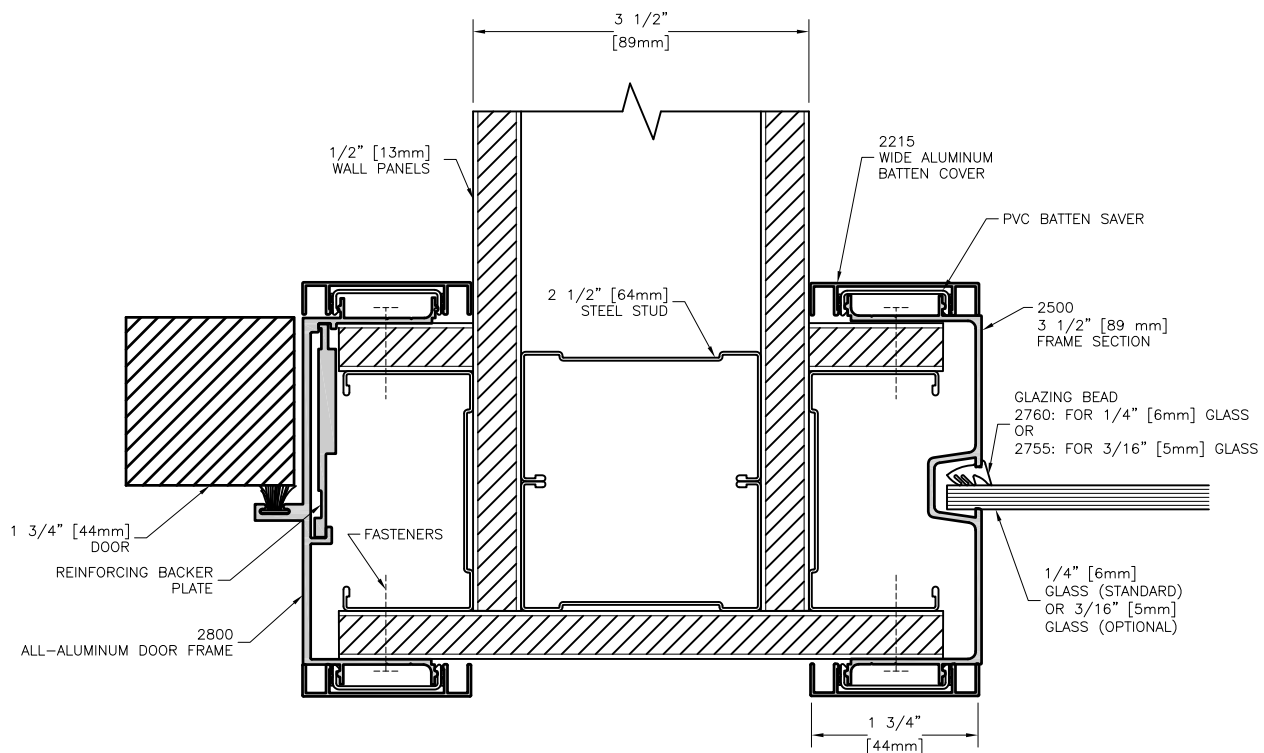


All-Aluminum Door & Window Framing for 3 1/2"

2-way T junction  
(with wide aluminum batten covers)

Drawing No.

**81-1-46-02**

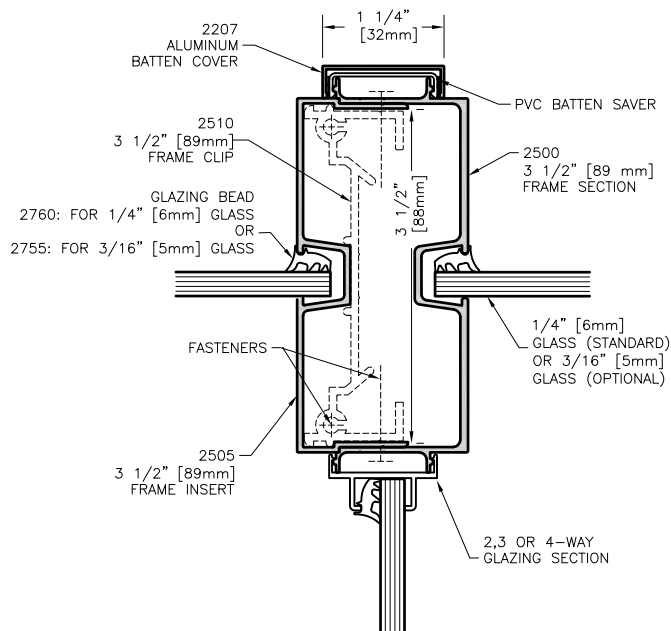


All-Aluminum Door & Window Framing for 3 1/2"

2-way T junction with door frame  
(with wide aluminum batten covers)

Drawing No.

**81-1-47-02**

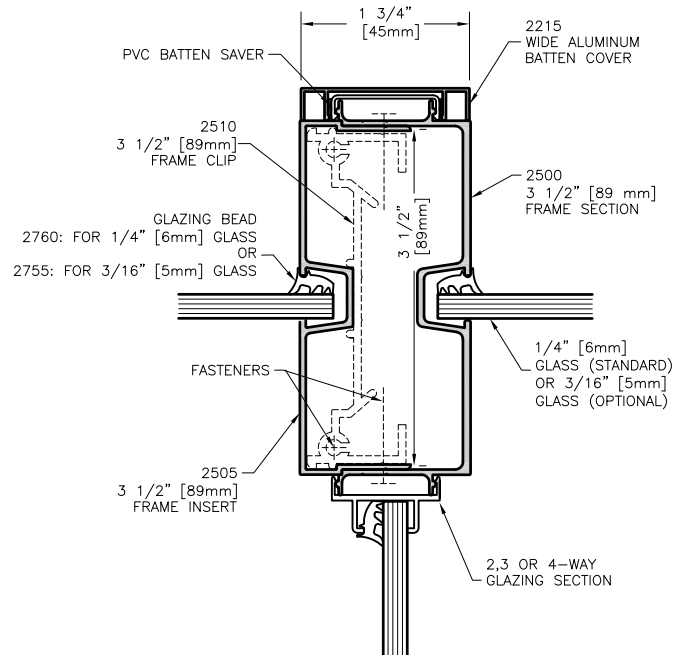


All-Aluminum Door & Window Framing for 3 1/2"

3-way glass  
(with aluminum batten covers)

Drawing No.

**81-1-48-01**

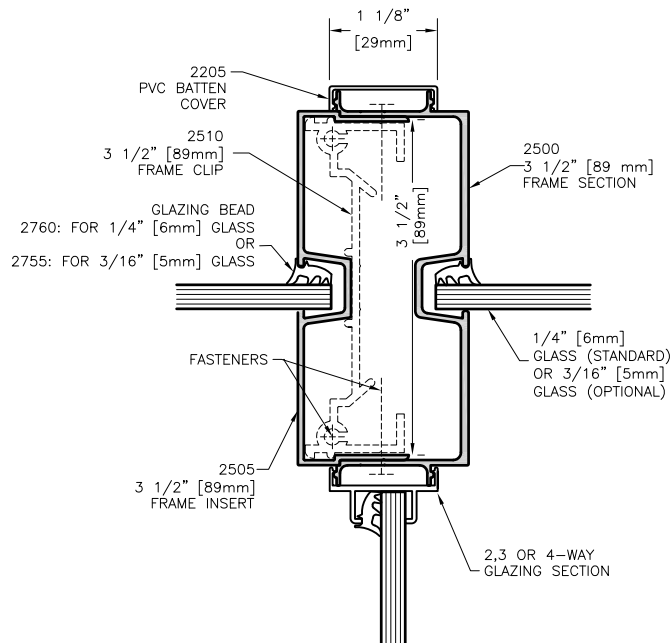


All-Aluminum Door & Window Framing for 3 1/2"

3-way glass  
(with wide aluminum batten covers)

Drawing No.

**81-1-48-02**



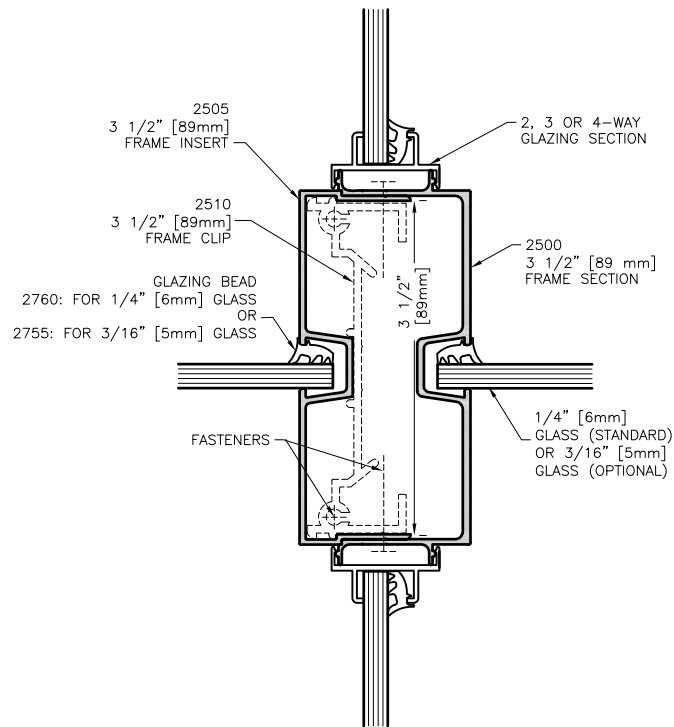
All-Aluminum Door & Window Framing for 3 1/2"

3-way glass  
(with PVC batten covers)

Drawing No.

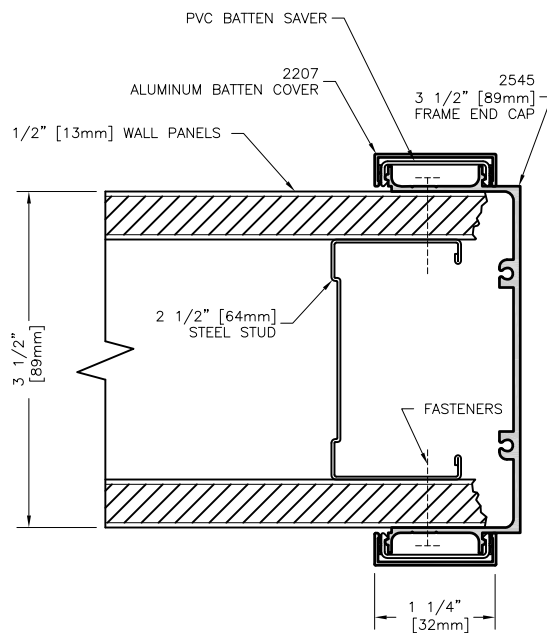
**81-1-48-03**





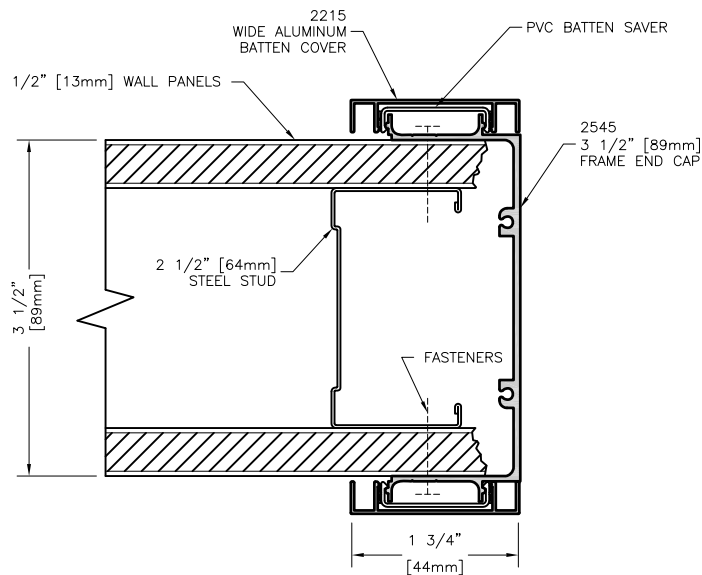
All-Aluminum Door & Window Framing for 3 1/2"  
4-way glass section

Drawing No.  
**81-1-49**



All-Aluminum Door & Window Framing for 3 1/2"  
End cap for solid panel  
(with aluminum batten covers)

Drawing No.  
**81-1-61-01**

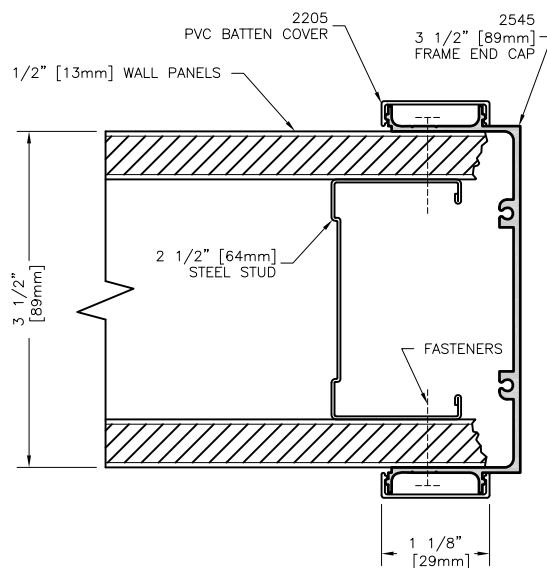


All-Aluminum Door & Window Framing for 3 1/2"

End cap for solid panel  
(with wide aluminum batten covers)

Drawing No.

**81-1-61-02**



All-Aluminum Door & Window Framing for 3 1/2"

End cap for solid panel  
(with PVC batten covers)

Drawing No.

**81-1-61-03**