

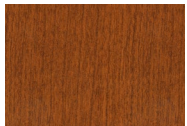
FABRICS | FINISHES



Paint:
Shadow



Primary Fabric:
Appoint | Chai



Laminate:
Henna Cherry



Upholstery:
Centurion | Berry

PREFIX[®]

Panel System



Maxon Furniture Inc.

With over 30 years experience, Maxon Furniture Inc. is recognized as an organization of the highest efficiency in the contract furniture industry, providing clients with outstanding quality and performance. Maxon offers a full range of workstations and freestanding desking, along with personalized space planning and support to achieve the right solution at the right price. Headquartered in Muscatine, Iowa, Maxon is an operating company of HNI Corporation, the world's second-largest office furniture manufacturer.

For more information
Visit www.maxonfurniture.com | Call 800.876.4274
Email Service@maxonmail.com



PREFIX has achieved BIFMA level 2 and SCS Indoor Advantage Gold Certifications.

Form #PRFX (5/15)
©2015 Maxon Furniture Inc.
Specifications subject to change without notice



A brand you can count on

As the most popular member of our systems offering, PREFIX® represents a distinguished place in our commitment to our future. Built in the USA by the HNI family of companies, known worldwide for manufacturing excellence, PREFIX® gives you the confidence of a proven product line with the progression of a new office system.



Overhead storage keeps often-used items close and off the worksurface.

Variable height panels and glass inserts allow for natural light.

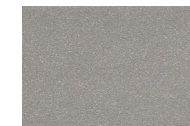
Electrical and data run through the raceway, keeping cables neat and out of sight.

Pedestals hold personal items and active records. Adding a cushion top will offer a seat for guests.



PREFIX® installs with ease and can be reconfigured to meet the needs of your changing environment.

FABRICS | FINISHES



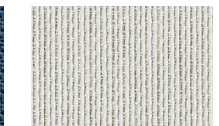
Paint: Platinum



Laminate: Natural Maple



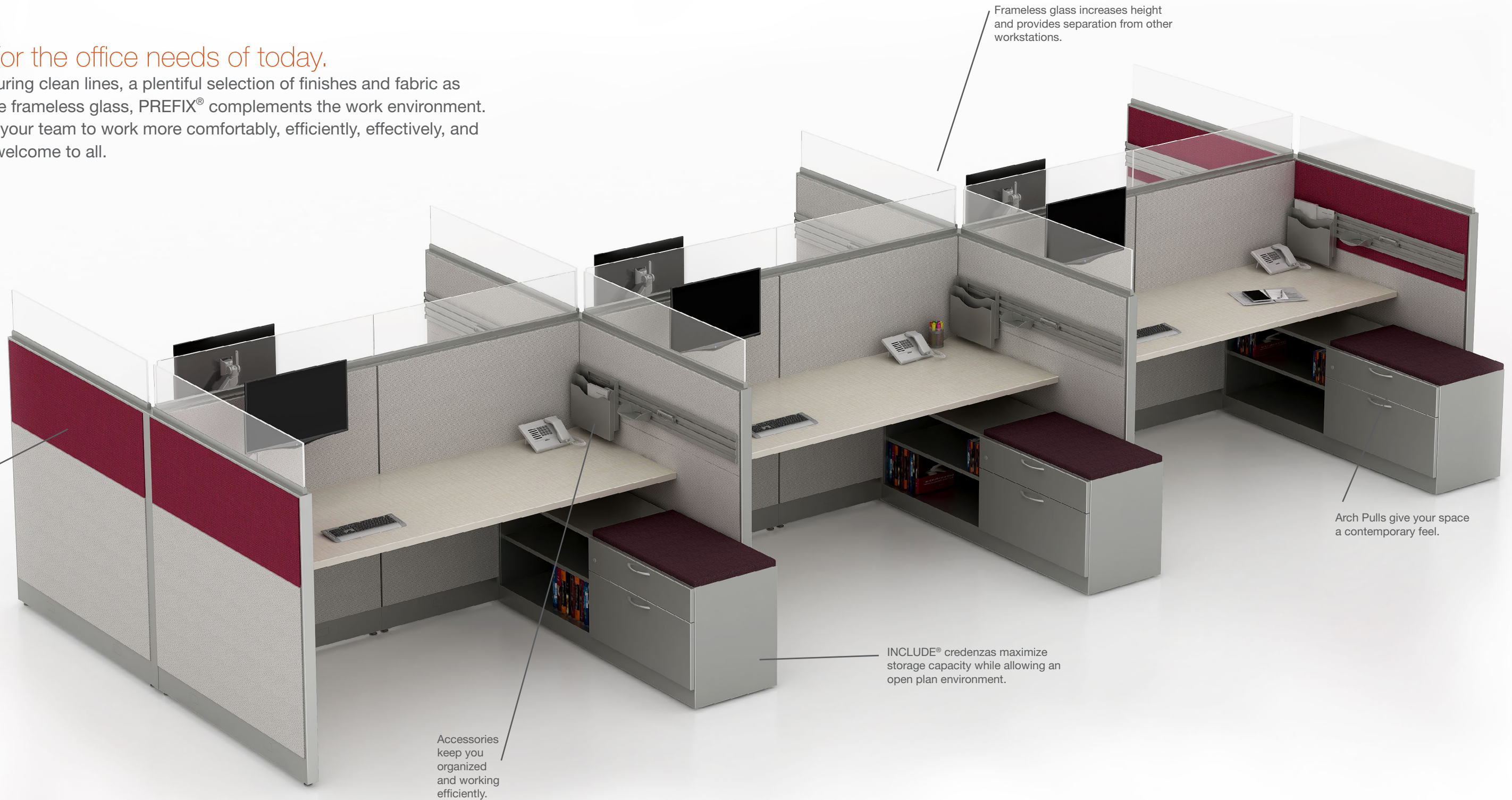
Accent Fabric: Appoint Color | Jet



Primary Fabric: Refuge | Frost

Designed for the office needs of today.

With design featuring clean lines, a plentiful selection of finishes and fabric as well as distinctive frameless glass, PREFIX® complements the work environment. PREFIX® assists your team to work more comfortably, efficiently, effectively, and in a workspace welcome to all.



Fabric stackers give you flexibility; choose a height and color that work now, change it later.

Frameless glass increases height and provides separation from other workstations.

Arch Pulls give your space a contemporary feel.

INCLUDE® credenzas maximize storage capacity while allowing an open plan environment.

Accessories keep you organized and working efficiently.



HNI products are designed for sustainable life. In fact, reuse and reconfiguration are part of our design criteria.

FABRICS | FINISHES

Paint: Platinum	Laminate: Sheer Mesh	Upholstery: Appoint Blackberry	Accent Fabric: Sarto Mist	Primary Fabric: Appoint Color Framboise

Affordable without compromising quality

PREFIX® function and flexibility allow you to maximize the use of space while prioritizing productivity. Durable with attention to fit and finish, PREFIX® installs with ease and can be reconfigured to meet the needs of your changing environment. Engineered to be versatile, efficient and cost effective.



Add a cushion top to your INCLUDE® credenza to provide additional seating.

There are a number of accessory options to customize an area.

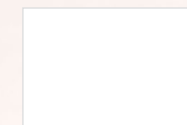
Stanchions add visual appeal while increasing surface space.

The open leg gives the design a light and open look.



Maxon offers product value without compromising performance and a Limited Lifetime Warranty for peace of mind long after the installation is finished.

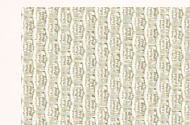
FABRICS | FINISHES



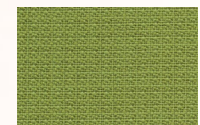
Paint:
White



Laminate:
Beigewood



Accent Fabric:
Reflections | Winter



Primary Fabric:
Appoint Color | Lawn



Dedicated to the improvement of our environment HNI products are designed for sustainable life. PREFIX® is recognized by SCS Indoor Advantage GOLD and BIFMA Level 2 certifications. With low emissions and renewable and recycled content materials, our products contribute to credits for LEED certification.



Overhead cabinets keep everything in place and close at hand.

Frosted or clear glass allow natural light.

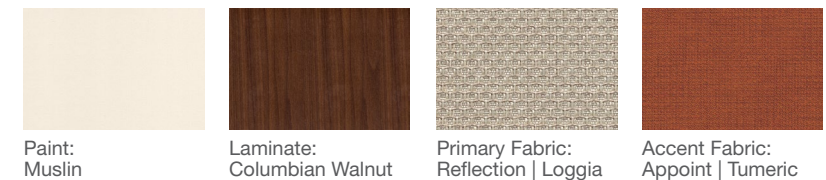
Enclosed offices can be appointed with either a sliding or hinged door.



HNI Corporation is the second-largest office furniture manufacturer in the world.

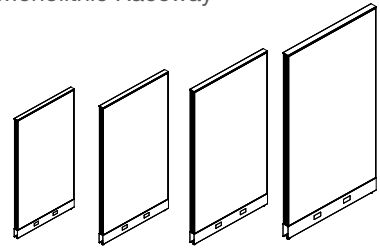
HNI was recognized by Fortune Magazine as one of America's Most Admired Companies.

FABRICS | FINISHES



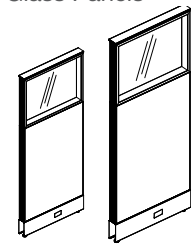
PREFIX Panels

Monolithic Raceway



35" High | 42" High | 50" High | 65" High
*Available in fabric only

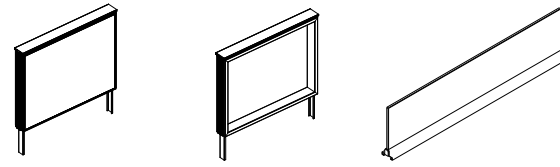
Glass Panels



50" High | 65" High
*Available in fabric base

Stacking Segments

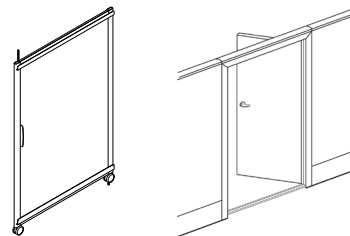
Fabric Stacker Glass Stackers Frameless Glass



15" High 15" High | 30" High 7.5" High | 15" High

Door Options

Sliding Door Hinged Door



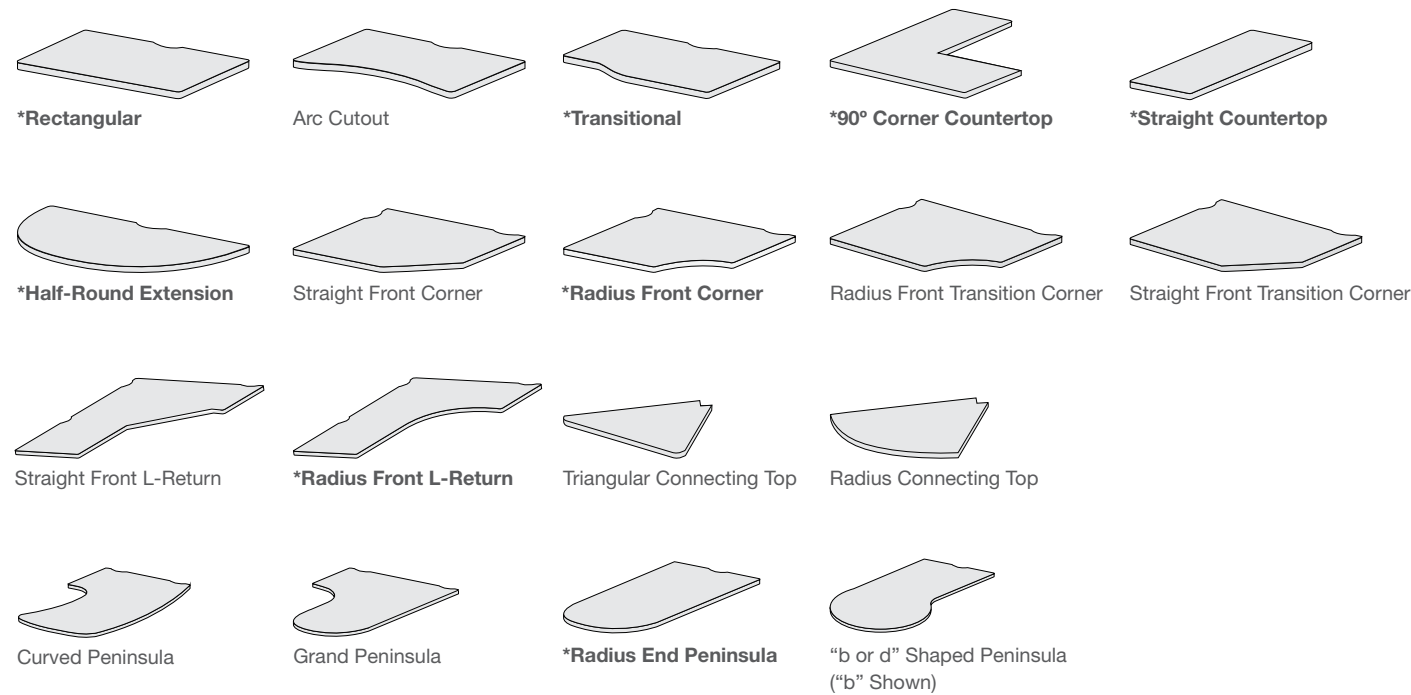
Worksurface Edge Options

T-Mold Solid Edgeband Woodgrain Edgeband



Thermal-Fused Laminate: Edgeband only

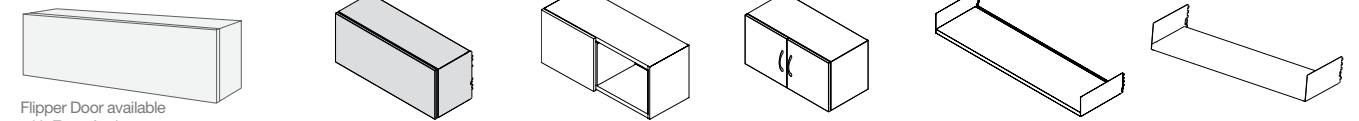
Worksurfaces



*Worksurface shape available in Thermal Fused Laminate and High Pressure Laminate

Overhead Storage

Flipper Door RTA Cabinet Steel Sliding Door Hinged Door Straight Shelf RTA Shelf

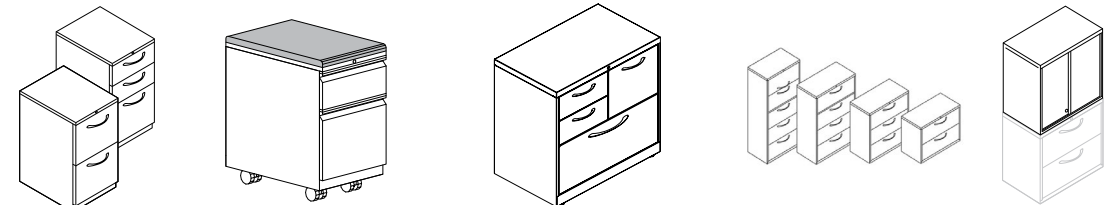


Flipper Door available with Easy-Assist.

Upmount available in Flipper, Sliding Steel and Hinged Door Overhead. Fluorescent and LED Task Light accessory option available. RTA = Ready-to-Assemble

Filing & Personal Storage

Stationary Pedestal Mobile Pedestal^c Personal Storage Center^{LC} Lateral Files^L Overfile Cabinet



A-Pull Shown

R-Pull Shown w/ Seat Cushion

Shown in A-Pull

Shown in A-Pull

Pedestals available in File/File or Box/Box/File

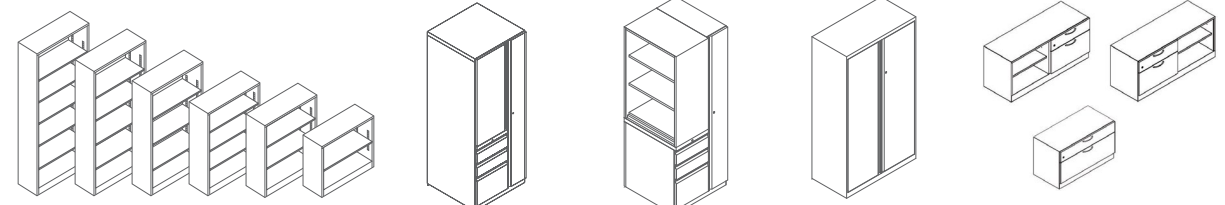
Bookcases

Personal Storage Tower

End Tower With Bookcase

Storage Cabinet

INCLUDE^{RLC} Low Storage



R-Pull Shown

R-Pull Shown

Shown in R-Pull

Shown in A-Pull

All Filing & Personal Storage are available in R-Pull and A-Pull options where applicable
^L = lateral top option | ^c = cushion top option

Accessories

Accessory Rail Binder Bin Center Drawer Desk Lamp Diagonal Tray Dual Monitor Arms File Pocket



Keyboard Tray Letter Tray Monitor Arm Paper Clip Paper Clip Tray Personal Shelf Tool Box Whiteboard/Tackboard



More Accessories available. See your Maxon Pricebook for all options and more information.